



PARKWAYSCHOOLS
HIGHER EXPECTATIONS. BRIGHTER FUTURES.

Financial Statements

Date: April 2023

PARKWAY SCHOOL DISTRICT
MONTHLY FINANCIAL REPORT
TABLE OF CONTENT

<u>DOCUMENT</u>	<u>PAGE</u>
EXECUTIVE SUMMARY.	1 - 2
GRAPHS - REVENUE, EXPENDITURE, CASH, AND FUND BALANCE .	3 - 5
RECAPITULATION OF FUNDS	6
ACCRUAL BALANCE SHEET.	7
BREAKOUT OF CASH AND INVESTMENTS	8
GRANTS FROM CARES ACT : COVID-19	9
MODIFIED ACCRUAL REVENUE SCHEDULE	10
EXPENDITURE SUMMARY BY OBJECT	11
FOOD SERVICE	12
EXPENDITURE SUMMARY BY BUILDING	13
EXPENDITURE SUMMARY BY PROGRAM	14 - 21
GLOSSARY	22 - 23
PURCHASING REPORTS	24 - 37



TO: Board of Education

DATE: May 25, 2023

FROM: Patricia Bedborough, CPA

RE: Executive Summary April 2023

Abstract

The April financial statements are attached. You may notice the continued increase in operating fund balance, property taxes, interest revenues, Prop C revenues, state transportation funding along with the transportation/tuition reimbursements as compared to last year. Our taxes paid under protest payment were received in April and that is usually received in either May or June. So having it early will bring in additional interest revenue as well. You will notice that federal food service revenues are lower than prior years. This is partially offset by the local revenue from food services with lunches now parent-paid. The food service program is running just under break even with total equipment purchases included. The expenditures are slightly higher than last year overall. We do have some savings from our salary and benefit accounts and this is due to multiple open operation positions.

Future Issues

The following issues are still pending and could affect district finances in the future:

1. Health Insurance Costs – Health costs are a large portion of our benefit expenses. Our pharmacy benefit manager is through Business Health Coalition and we have substantial savings over market trends for our pharmacy. With the implementation of CVS as our PBM, we have seen savings and a reduction of the market increases. We opened our near site clinics for our employees and staff effective August 2018 and will be going through a bidding process soon. We had no increase in our premiums for 2023 and our only plan change is the change in the HD plan deductible.
2. Commercial Property Assessments Appeals – As you are aware this has been a struggle over the last several years. We have seen our collection rate fluctuate due to these settlements. We worked with the state auditor's office last year and have approved \$3.7 million in recoupment. We are delaying the levy of the recoupment to future years. Our collection rate continues to be around 96%.
3. New Construction Assessments - In September we received our final amounts from St. Louis County. We had another strong year with new construction with just over \$32 million in commercial and residential property and \$133 million in new personal property mainly attributed to the increased value of used cars.

4. Interest Income –Our interest from our banking account is budgeted to increase significantly due to the Fed's increasing the treasury rate. We are currently receiving over 4.5% interest for our daily cash balance.
5. State Revenue –DESE will be basing our formula calculation on our attendance from two years ago. With the pandemic, our lowest attendance year was last year.
6. Spot Market Purchases – For information purposes, fiscal year-to-date purchases under the spot market procurement policy are as follows:

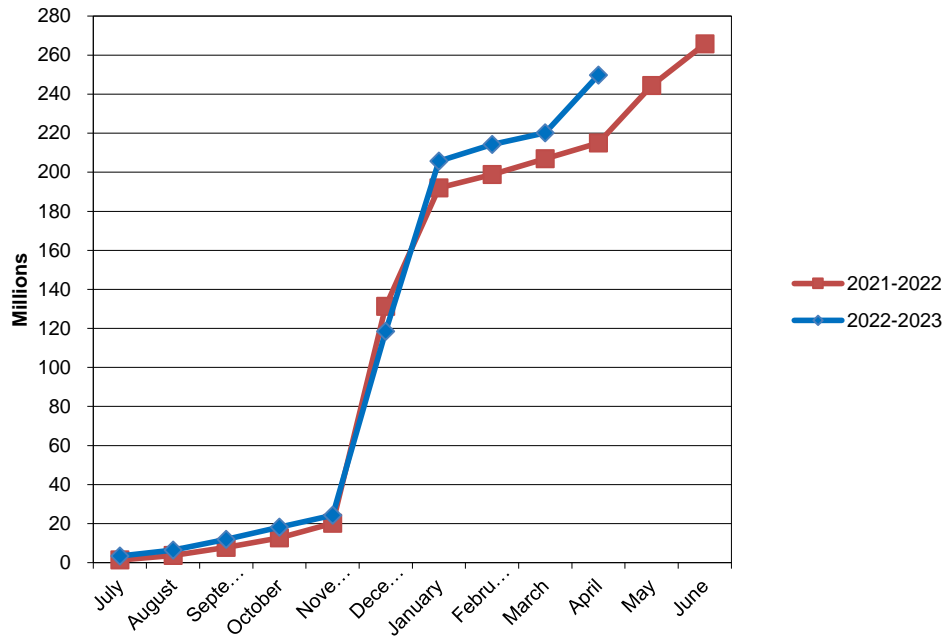
Fuel (Facilities) \$ 198,885.04

Fuel (Trans) \$ 278,482.80

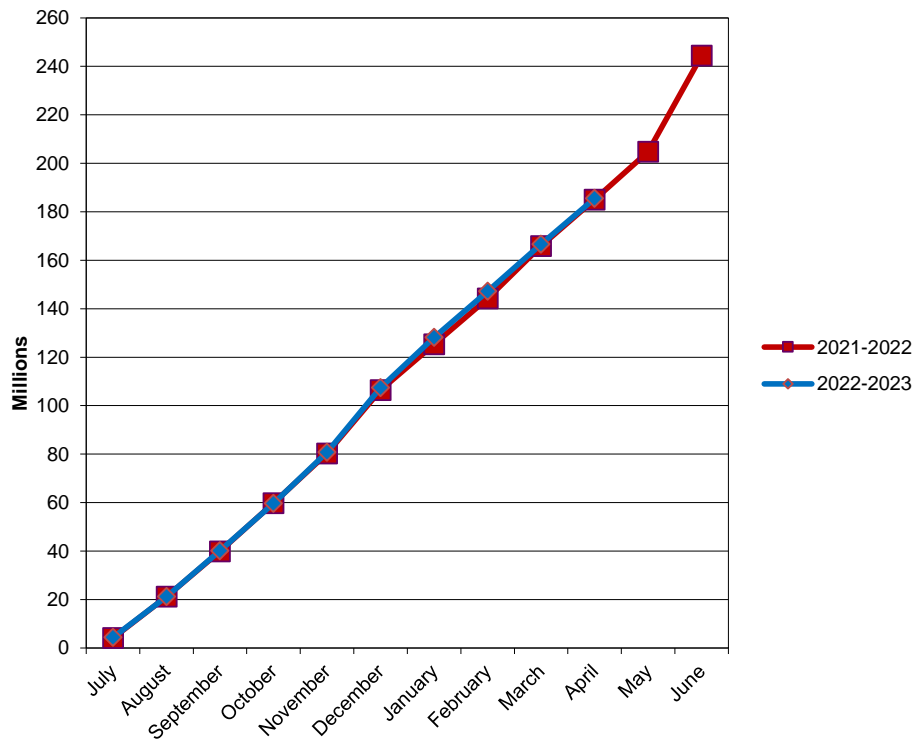
Paper \$ 160,240.10

Trash Liner \$ 34,779.00

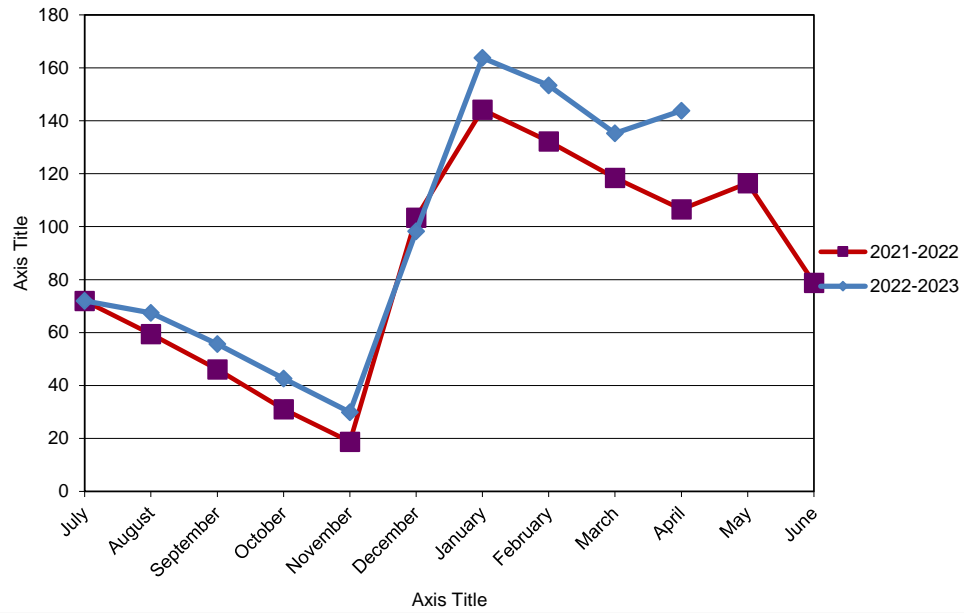
PARKWAY SCHOOL DISTRICT ACTUAL OPERATING REVENUE

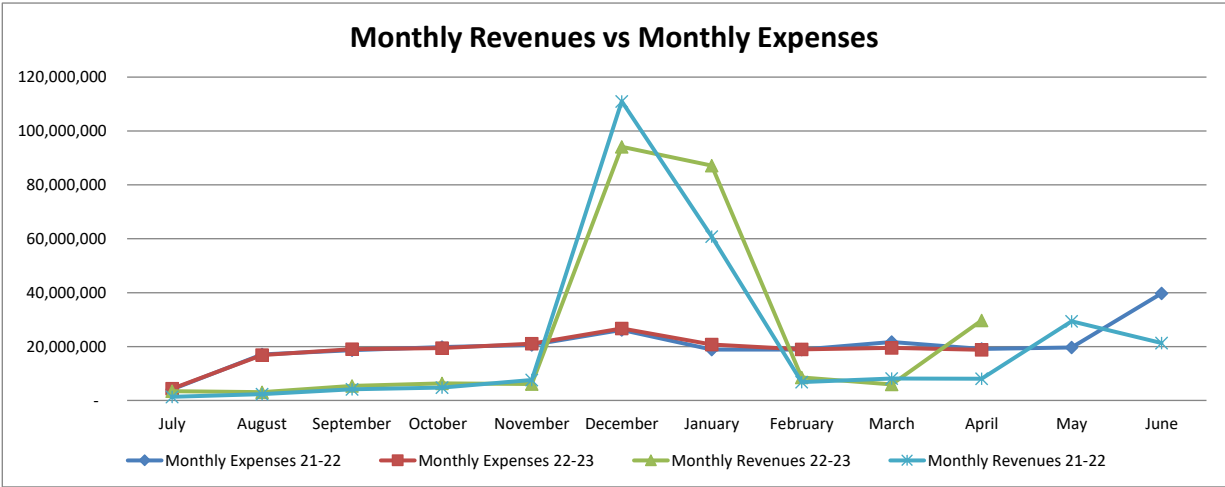
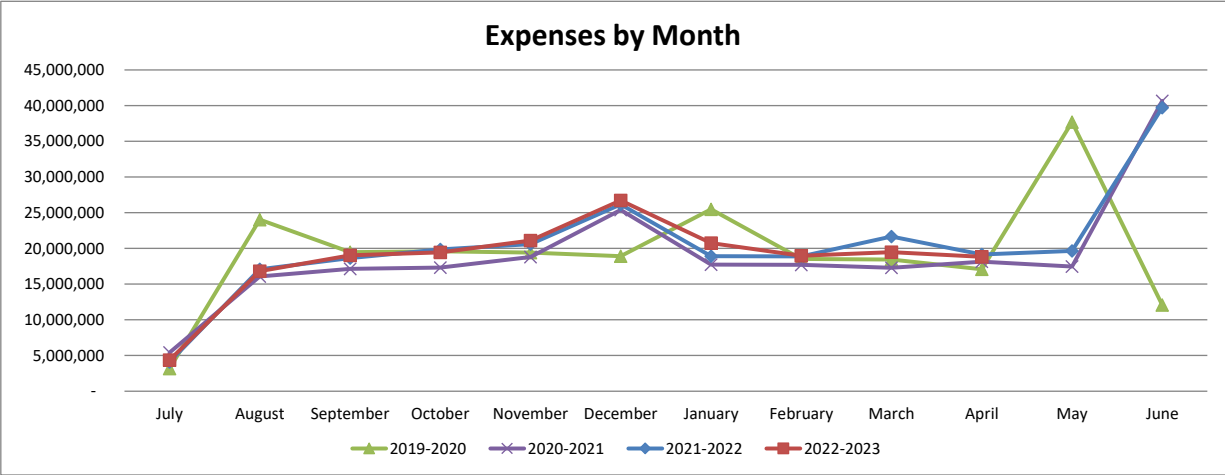
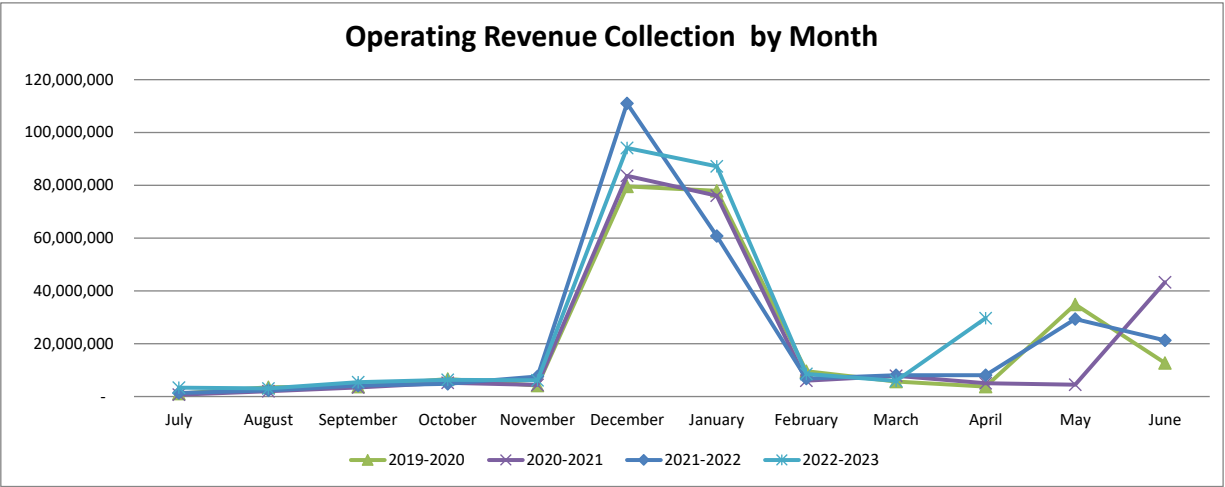


PARKWAY SCHOOL DISTRICT ACTUAL OPERATING EXPENDITURES



PARKWAY SCHOOL DISTRICT OPERATING FUND CASH AND INVESTMENTS





**Parkway School District
Recapitulation of Funds
Budget 2022-2023 With Restatement of Opening Balances**

FY2023 Full Year Budget

	Operating	Debt Service	Capital Projects	2018 Bond Issue	2022 Bond Issue	All Funds
Beginning Fund Balance	81,810,866	16,948,311	19,884,393	37,356,104		155,999,674
Revenues	265,705,412	27,831,144	3,740,284	191,394	-	297,468,234
Expenses	256,348,077	22,440,896	5,783,085	35,000,000		319,572,058
Transfers	(6,000,000)	-	6,000,000	-	-	-
Ending Fund Balance	85,168,201	22,338,559	23,841,592	2,547,498	-	133,895,850

ACTUAL FY23 THROUGH 4/30/23

	Operating	Debt Service	Capital Projects	2018 Bond Issue	2022 Bond Issue	All Funds
Beginning Fund Balance	81,810,866	16,948,311	19,884,393	37,356,104		155,999,674
Revenues	249,823,185	27,838,136	3,749,506	601,035	98,722,116	380,733,978
Expenses	185,490,007	22,426,142	5,559,517	25,857,716	1,501,595	240,834,977
Transfers	-	-	-			-
Ending Fund Balance	146,144,044	22,360,305	18,074,382	12,099,423	97,220,521	295,898,675

ACTUAL FY22 THROUGH 4/30/22

	Operating	Debt Service	Capital Projects	2018 Bond Issue	2022 Bond Issue	All Funds
Beginning Fund Balance	65,601,989	13,979,499	15,033,182	57,786,000		152,400,670
Revenues	215,001,718	23,821,678	2,984,267	101,659	-	241,909,322
Expenses	185,090,661	24,347,903	2,942,076	12,871,719	-	225,252,359
Transfers	-	-	-			-
Ending Fund Balance	95,513,046	13,453,274	15,075,373	45,015,940	-	169,057,633

**PARKWAY SCHOOL DISTRICT
ACCRUAL BALANCE SHEET
APRIL 30, 2023**

	TOTAL- ALL FUNDS 4/30/23	TOTAL- ALL FUNDS 4/30/22
ASSETS		
Cash & Investments	309,313,555	190,465,180
Accounts Receivable	183,597	196
Inventories	4,185,035	1,006,562
Prepaid Expenses	3,930,397	2,914,302
Land	3,457,837	3,457,837
Land Improvements	17,375,608	16,122,147
Buildings/Improvements	201,550,105	195,589,218
Construction in Progress	48,759,117	50,124,673
Equipment	9,291,824	11,110,190
	<hr/>	<hr/>
Total Assets	598,047,075	470,790,305
LIABILITIES & FUND BALANCE		
Accounts Payable - Operating Funds	2,343,935	4,688,051
Accounts Payable - Bond Issue Funds	108,013	76,283
Accounts Payable - Capital Projects Funds	34,309	-
Accounts Payable - Medical Fund	14,503	-
Wages, Payroll Taxes, and Benefits Payable	3,603,995	3,811,767
Bonds Payable	227,965,000	243,765,000
Interest Payable	2,596,764	2,702,497
Liability for Compensated Absences	1,613,494	1,792,818
Liability for Early Retirement	-	-
	<hr/>	<hr/>
Total Liabilities	238,280,013	256,836,734
Bond Issue Fund Balance (combined 2018 and 2022)	109,319,944	45,015,940
Debt Service Fund Balance	22,360,305	13,453,274
Capital Projects Fund Balance	18,074,382	15,075,373
Equity in Fixed Assets less Long Term Liabilities	48,259,233	28,143,750
Medical Fund Balance	15,609,154	16,752,188
Operating Fund Balance	146,144,044	95,513,046
	<hr/>	<hr/>
Total Fund Balance	359,767,062	213,953,571
TOTAL LIABILITIES & FUND BALANCE	<hr/> 598,047,075 <hr/>	<hr/> 470,790,305 <hr/>

BREAKOUT OF CASH & INVESTMENT BALANCE

	<u>4/30/23</u>	<u>4/30/22</u>
MEDICAL FUND CASH	15,623,657	16,752,186
DEBT SERVICE FUND CASH	18,976,174	6,045,194
DEBT SERVICE FUND INVESTMENTS	3,384,117	7,443,488
BOND ISSUE FUND CASH	109,400,971	44,939,657
CAPITAL PROJECTS FUND CASH	18,135,675	8,661,131
OPERATING FUND CASH	68,784,574	21,295,337
OPERATING FUND INVESTMENTS	75,008,384	85,328,187
	<hr/>	<hr/>
TOTAL	309,313,555	190,465,180

RESTRICTED RESERVE

	<u>4/30/23</u>	<u>4/30/22</u>
FOOD SERVICE	(2,370,283)	(852,981)
MEDICAL BENEFITS	15,609,154	16,752,188
STUDENT ACTIVITY	4,055,168	3,679,455
	<hr/>	<hr/>
TOTAL	17,294,039	19,578,662

Grants from Covid-19 Stimulus Funds

Grant	Award	Received	Spent through 4/30/23	Status	Description
Cares Act - ESSER	875,664	875,644	875,664	approved - fully received and fully spent	Utilized for salaries and benefits during closure. \$190,000 of grant is for non public schools.
Coronavirus Relief Fund(CRF)	1,199,707	1,199,707	1,199,707	approved - fully received and fully spent	Grant expenses include PPE, care coordinators and digital learning expenses. \$77,389 of this grant will be paid to VICC.
Covid-19 Response Supply Grant	502,883	502,883	502,883	approved - fully spent and received	This grant is a 75/25% split between the County and state. PPE, partitions and sanitation supplies were applied against this grant.
Student Connectivity Grant - B	112,000	112,000	112,000	approved - fully spent and received	Grant is a 50% reimbursement for hot spots
Transportation Supplement	153,918	97,843	100,821	Parkway spent all funds allocated to Parkway. Remainder is related to non-publics.	Grant is primarily for transportation PPE and sanitation supplies and summer school expenses for buses. Have until 9/30/22 to spend the funds.
Cares Act - unemployment	TBD	178,482	356,964	This is auto applied to our unemployment bills. Currently have a credit on our bills.	Reimburses District for 50% of unemployment expenses
County Early Cares Child Care Reponse Program	100,950	100,950	100,950	approved and fully spent	Costs incurred to child care facilities in St. Louis County for business interruption expenses and compliance with health and safety measures
ESSER II	5,378,360	5,378,360	5,378,360	approved - fully received and fully spent	Uses include PPE, air quality improvements, digital learning expenses, sub costs related to COVIDS absences, contact tracers, counselors and care coordinators over the next two fiscal years.
ESSER III*	11,897,669	4,952,903	4,064,219	This grant will go through the FY24 school year	Similar to ESSER II with the addition of summer school expenses, reading specialist, and instructional coaches. Have until 9/30/24 to spend the funds. 20% of the grant must address learning loss.
Teacher Retention Grant	615,000	500,000	500,000	approved - mostly spent. Working with DESE to finalize remaining portion	Used for stipends and future scholarships
Totals	20,396,083	13,398,772	12,924,811		

PARKWAY SCHOOL DISTRICT
MODIFIED ACCRUAL REVENUE SCHEDULE
APRIL 30, 2023

	YEAR TO DATE 4/30/23				YEAR TO DATE 4/30/22				CHANGE FROM PRIOR YEAR	
	BUDGETED	REVENUE	%	BALANCE TO	REVENUE	REVENUE	%	BALANCE TO		
	REVENUE	REALIZED	REALIZED	BE REALIZED	6/30/22	REALIZED	REALIZED	BE REALIZED	\$	%
LOCAL										
Property Taxes	189,192,844	191,173,904	101.05%	(1,981,060)	186,745,115	163,249,113	87.42%	23,496,002	27,924,791	17.11%
Delinquent Property Taxes	-	-	0.00%	-	679,934	-	0.00%	679,934	-	0.00%
Prop C	19,375,000	13,310,719	68.70%	6,064,281	19,826,522	12,912,598	65.13%	6,913,924	398,121	3.08%
M&M Surtax	5,703,679	5,666,447	99.35%	37,232	5,653,660	3,901,328	69.01%	1,752,332	1,765,119	45.24%
Food Service	4,269,813	3,110,630	72.85%	1,159,183	326,369	326,039	99.90%	330	2,784,591	854.07%
Other Local	4,990,897	2,929,978	58.71%	2,060,919	5,080,364	2,909,522	57.27%	2,170,842	20,456	0.70%
VICC-VST Revenue	6,090,823	2,233,437	36.67%	3,857,386	6,645,739	1,993,722	30.00%	4,652,017	239,715	12.02%
TOTAL LOCAL	229,623,056	218,425,115	95.12%	11,197,941	224,957,703	185,292,322	82.37%	39,665,381	33,132,793	17.88%
INTEREST	1,010,000	3,666,443	363.01%	(2,656,443)	164,489	275,724	167.62%	(111,235)	3,390,719	2061.37%
COUNTY	3,542,740	1,279,962	36.13%	2,262,778	3,565,267	3,593,927	100.80%	(28,660)	(2,313,965)	-64.90%
STATE										
Basic Formula	2,073,735	2,190,753	105.64%	(117,018)	2,597,004	2,257,971	86.95%	339,033	(67,218)	-2.59%
Classroom Trust	6,646,602	5,502,417	82.79%	1,144,185	6,670,626	5,557,659	83.32%	1,112,967	(55,242)	-0.83%
Transportation	4,000,000	4,116,689	102.92%	(116,689)	1,556,084	1,303,856	83.79%	252,228	2,812,833	180.76%
Other State	1,512,877	1,151,036	76.08%	361,841	1,531,162	896,276	58.54%	634,886	254,760	16.64%
TOTAL STATE	14,233,214	12,960,895	91.06%	1,272,319	12,354,876	10,015,762	81.07%	2,339,114	2,945,133	23.84%
FEDERAL										
Federal Food Service	2,614,040	2,884,693	110.35%	(270,653)	7,454,332	6,014,741	80.69%	1,439,591	(3,130,048)	-41.99%
Other Federal Entitlements	8,606,804	4,682,518	54.40%	3,924,286	12,432,999	5,884,729	47.33%	6,548,270	(1,202,211)	-9.67%
TOTAL FEDERAL	11,220,844	7,567,211	67.44%	3,653,633	19,887,331	11,899,470	59.83%	7,987,861	(4,332,259)	-21.78%
OTHER FINANCING SOURCES										
Transportation Reimbursement	2,508,450	3,042,508	121.29%	(534,058)	1,544,199	1,594,200	103.24%	(50,001)	1,448,308	93.79%
Tuition From Other Districts	28,930	17,701	61.19%	11,229	55,521	4,420	7.96%	51,101	13,281	23.92%
Sale Of Property	38,178	12,231	32.04%	25,947	38,178	33,047	86.56%	5,131	(20,816)	-54.52%
TOTAL OTHER FINANCING SOURCES	2,575,558	3,072,440	119.29%	(496,882)	1,637,898	1,631,667	99.62%	6,231	1,440,773	87.96%
SUB-TOTAL OPERATING REVENUE	262,205,412	246,972,066	94.19%	15,233,346	262,567,564	212,708,872	81.01%	49,858,692	34,263,194	13.05%
STUDENT ACTIVITIES	3,500,000	2,851,119	81.46%	648,881	3,123,352	2,292,846	73.41%	830,506	558,273	17.87%
TOTAL OPERATING REVENUE	265,705,412	249,823,185	94.02%	15,882,227	265,690,916	215,001,718	80.92%	50,689,198	34,821,467	13.11%
NON-OPERATING REVENUES										
2019 Bond Issue Interest/Premium	191,394	601,035	314.03%	(409,641)	191,394	101,659	53.12%	89,735	499,376	260.92%
2022 Bond Issue Interest/Premium	-	8,722,116	-	-	-	-	-	-	-	-
2022 Sale of Bonds	-	90,000,000	-	-	-	-	-	-	-	-
Debt Service Property Taxes	26,893,473	27,174,951	101.05%	(281,478)	26,495,215	23,058,222	87.03%	3,436,993	4,116,729	15.54%
Debt Service Delinquent Prop. Taxes	-	-	0.00%	-	96,433	-	0.00%	96,433	-	0.00%
Debt Service Interest/Premium	200,000	505,653	252.83%	(305,653)	(13,376)	29,861	-223.24%	(43,237)	475,792	-3557.06%
Debt Service County Revenue	737,671	157,532	21.36%	580,139	738,443	733,595	99.34%	4,848	(576,063)	-78.01%
Cap. Projects Property Taxes	3,347,963	3,382,694	0.00%	(34,731)	3,151,246	2,545,732	0.00%	605,514	836,962	26.56%
Capital Projects Other	392,217	364,178	92.85%	28,039	485,405	438,518	90.34%	46,887	(74,340)	-15.32%
Capital Interest/Premium	104	2,634	2532.69%	(2,530)	104	17	16.35%	87	2,617	2516.35%
TOTAL ALL REVENUE SOURCES	297,468,234	380,733,978	127.99%	(83,265,744)	296,847,254	241,909,322	81.49%	54,937,932	138,824,656	46.77%

EXPENDITURE SUMMARY BY OBJECT
TOTAL ALL FUNDS
APRIL 30, 2023

	BUDGET 2022-2023	ACTUAL EXPENDITURES YTD 4/30/23	% EXPENDED 2022-2023	ACTUAL** EXPENDITURES 06/30/2022	ACTUAL EXPENDITURES YTD 4/30/22	% EXPENDED 2021-2022	CHANGE FROM PRIOR YEAR \$ %	
SALARIES								
Certificated	109,231,068	76,965,415	70.46%	106,904,488	78,475,244	73.41%	(1,509,829)	-1.92%
Classified	39,057,437	27,269,463	69.82%	36,298,690	28,900,786	79.62%	(1,631,323)	-5.64%
Administrative	13,073,035	10,635,048	81.35%	13,210,763	11,071,493	83.81%	(436,445)	-3.94%
TOTAL SALARIES	161,361,540	114,869,926	71.19%	156,413,941	118,447,523	75.73%	(3,577,597)	-3.02%
BENEFITS								
Retirement, Social Security and Medicare	27,574,610	19,453,535	70.55%	26,414,734	20,024,496	75.81%	(570,961)	-2.85%
Medical, Dental and Life Insurance	28,045,734	19,673,825	70.15%	26,133,664	20,389,139	78.02%	(715,314)	-3.51%
TOTAL BENEFITS	55,620,344	39,127,360	70.35%	52,548,398	40,413,635	76.91%	(1,286,275)	-3.18%
PURCHASED SERVICES								
Substitute Services	3,790,725	2,143,098	56.54%	2,996,373	2,548,994	85.07%	(405,896)	-15.92%
Tuition	827,375	782,888	94.62%	313,809	205,933	65.62%	576,955	280.17%
Professional Services	3,310,953	1,862,133	56.24%	2,342,828	1,878,443	80.18%	(16,310)	-0.87%
Audit	36,000	31,000	86.11%	35,800	31,000	86.59%	-	0.00%
Technical Services	149,591	67,634	45.21%	131,819	106,839	81.05%	(39,205)	-36.70%
Legal Services	200,000	124,932	62.47%	164,027	118,396	72.18%	6,536	5.52%
Property Services	2,833,039	2,233,828	78.85%	2,591,150	2,140,385	82.60%	93,443	4.37%
Travel & Contracted Trans.	1,786,919	1,903,449	106.52%	2,034,826	1,249,322	61.40%	654,127	52.36%
Property Insurance	968,000	1,009,105	104.25%	607,949	607,949	100.00%	401,156	65.99%
Liability Insurance	1,067,200	800,254	74.99%	674,751	674,751	100.00%	125,503	0.00%
Other Purchased Services	4,117,650	3,123,935	75.87%	3,252,591	2,319,384	71.31%	804,551	34.69%
TOTAL PURCHASED SERVICES	19,087,452	14,082,256	73.78%	15,145,923	11,881,396	78.45%	2,200,860	18.52%
CONSUMABLES								
General Supplies	6,176,511	5,266,219	85.26%	5,433,579	3,939,132	72.50%	1,327,087	33.69%
Instructional Supplies	5,627,656	4,418,811	78.52%	4,855,355	3,213,734	66.19%	1,205,077	37.50%
Textbooks and Library Books	1,547,577	472,810	30.55%	701,650	517,122	73.70%	(44,312)	-8.57%
Gasoline/Diesel	700,750	635,776	90.73%	704,672	567,039	80.47%	68,737	12.12%
Energy Services	3,709,000	2,982,449	80.41%	3,679,856	2,802,930	76.17%	179,519	6.40%
Food Service Supplies	2,517,247	1,701,870	67.61%	2,448,974	1,947,453	79.52%	(245,583)	-12.61%
TOTAL CONSUMABLES	20,278,741	15,477,935	76.33%	17,824,086	12,987,410	72.86%	2,490,525	19.18%
SUBTOTAL OPERATING EXPENSES	256,348,077	183,557,477	71.60%	241,932,348	183,729,964	75.94%	(172,487)	-0.09%
STUDENT ACTIVITIES	3,500,000	1,932,530	55.22%	2,549,691	1,360,697	53.37%	571,833	1.85%
ANTICIPATED EXPENDITURE SAVINGS	(3,500,000)	-	0.00%	-	-	0.00%	-	0.00%
TOTAL OPERATING EXPENSES	256,348,077	185,490,007	72.36%	244,482,039	185,090,661	75.71%	399,346	0.22%
CAPITAL OUTLAY - NON BOND EXPENSES								
Land Improvement	215,581	49,750	23.08%	546,236	515,669	94.40%	(465,919)	100.00%
Building Alterations	1,610,000	1,976,957	122.79%	604,384	397,993	65.85%	1,578,964	396.73%
General Equipment	1,028,468	1,004,867	97.71%	625,362	398,005	63.64%	606,862	152.48%
Instructional Equipment	228,473	162,018	70.91%	119,491	75,073	62.83%	86,945	115.81%
Technology Equipment	666,800	761,705	114.23%	272,952	186,544	68.34%	575,161	308.32%
Student Activity	65,000	177,001	272.31%	181,702	83,121	45.75%	0.00%	0.00%
Vehicles	600,000	178,385	29.73%	162,218	120,926	74.55%	57,459	47.52%
School Buses	1,084,344	1,084,344	100.00%	955,690	974,439	101.96%	11,289	11.28%
TOTAL CAPITAL OUTLAY	5,498,666	5,395,027	98.12%	3,468,035	2,751,770	79.35%	2,643,257	96.06%
2018 BOND ISSUE EXPENDITURES	35,000,000	25,857,716	73.88%	20,621,290	12,871,719	62.42%	12,985,997	100.89%
2022 BOND ISSUE EXPENDITURES		1,501,595						
CAPITAL FUND - BUS LEASES	284,419	164,490	57.83%	328,983	190,306	57.85%	(25,816)	-13.57%
DEBT SERVICE - GO BONDS	22,440,896	22,426,142	99.93%	24,347,903	24,347,903	100.00%	(1,921,761)	-7.89%
GRAND TOTAL EXPENSES	319,572,058	240,834,977	75.36%	293,248,250	225,252,359	76.81%	15,582,618	6.92%

**FOOD SERVICE
STATEMENT OF INCOME AND EXPENSE
April 30, 2023**

	BUDGET FY23	CURRENT MONTH	ACTUAL EXPENDITURES YTD 4/30/23	% EXPENDED	PRIOR YEAR ACTUAL FY22	PRIOR YEAR TO DATE YTD 4/30/22	PRIOR YEAR % EXPENDED
RESERVE FOOD SERVICE SURPLUS		(\$2,468,591)	(\$2,384,393)		(\$804,185)	(\$2,384,393)	
INCOME							
LOCAL	4,269,813	529,201	3,110,630	72.85%	211,425	326,039	52.20%
LOCAL ADJ PER FOOD SERVICE		-	-		-	-	
LOCAL ADJ PER BANK		-	-		-	-	
POS INCOME *		2,127	-		-	-	0.00%
STATE	42,391	234,144	12,468	29.41%	39,261	26,541	18.53%
FEDERAL	2,614,040	-	2,009,411	76.87%	2,522,300	7,055,849	59.94%
TOTAL INCOME	6,926,244	763,345	5,132,509	74.10%	2,772,986	7,408,429	267.16%
COST OF GOODS SOLD:							
Beginning Inventory		368,917	150,692		281,567	277,629	100.00%
Add: Purchases-Food	2,517,247	211,788	1,701,870	67.61%	941,738	1,947,453	56.16%
Purchases-Other	1,500	960	1,680	112.00%	116,073	36,113	80.15%
Goods Available		581,665	1,854,242		1,339,378	2,261,195	67.45%
Less: Ending Inventory		347,066	322,965		277,629	174,392	104.54%
TOTAL COST OF GOODS	2,518,747	234,599	1,531,277	60.80%	1,061,749	2,086,803	196.54%
GROSS MARGIN	\$4,407,497	528,747	3,601,232	81.71%	1,711,237	5,321,626	310.98%
OPERATION COSTS:							
Salaries	1,864,243	97,211	927,283	49.74%	2,002,895	1,729,121	70.87%
Fringe Benefits	1,020,067	56,774	530,362	51.99%	1,095,848	846,850	70.19%
Purchased Services	2,412,780	274,751	2,093,159	86.75%	73,763	1,099,891	75.54%
Operating Supplies	81,550	1,704	54,633	66.99%	47,391	54,460	93.95%
Credit for Services	-	-	(206,535)	100.00%	(47,114)	(31,094)	48.80%
Total Operating Costs	5,378,640	430,439	3,398,902	63.19%	3,172,783	3,699,227	116.59%
INCOME (LOSS) FROM OPERATIONS	(971,143)	98,308	202,330		(1,461,546)	1,622,399	-111.01%
EQUIPMENT	309,013	-	286,528	92.72%	118,662	90,987	96.49%
RESERVE FOOD SERVICE SURPLUS		(\$2,370,283)	(\$2,468,591)		(\$2,384,393)	(\$852,981)	35.77%

**Parkway School District
Building Location Recap Report**

Fiscal Year 2023 Through Period 10 Run Date: 05-23-2023 @ 13:45:47

	Budget	Expended	Encumbrances	Unexpended
FERN RIDGE HIGH	24,600.00	16,046.84	0.00	8,553.16
CENTRAL HIGH	315,542.00	223,374.38	25,981.30	66,186.32
NORTH HIGH	293,070.00	173,218.77	48,527.22	71,324.01
WEST HIGH	427,938.00	262,338.68	29,355.90	136,243.42
SOUTH HIGH	473,857.00	280,474.89	40,839.50	152,542.61
SOUTHWEST MIDDLE	149,510.00	98,137.08	20,012.85	31,360.07
CENTRAL MIDDLE	177,391.00	106,183.96	28,601.85	42,605.19
NORTHEAST MIDDLE	120,947.00	82,400.26	21,277.36	17,269.38
SOUTH MIDDLE	113,313.00	87,872.37	2,509.86	22,930.77
WEST MIDDLE	188,588.00	99,796.86	5,789.48	83,001.66
MCKELVEY PRIMARY	33,938.00	23,493.20	0.00	10,444.80
BARRETS ELEM.	55,117.00	48,795.95	1,212.07	5,108.98
BELLERIVE ELEM.	82,360.00	47,217.00	6,289.33	28,853.67
CARMAN TRAILS ELEM.	96,810.00	69,237.27	2,067.42	25,505.31
CLAYMONT ELEM.	106,855.00	60,666.56	1,052.67	45,135.77
CRAIG ELEM.	61,537.00	54,387.44	2,193.70	4,955.86
GREEN TRAILS ELEM.	68,920.00	33,864.30	3,891.45	31,164.25
HANNA WOODS ELEM.	98,541.00	54,807.70	0.00	43,733.30
HENRY ELEM.	115,322.00	97,368.42	6,931.08	11,022.50
HIGHCROFT ELEM.	71,472.00	31,165.47	2,761.97	37,544.56
MASON RIDGE ELEM.	87,541.00	30,021.33	1,200.00	56,319.67
MCKELVEY INTERMEDIATE	66,448.00	50,089.71	1,233.59	15,124.70
OAK BROOK ELEM.	70,875.00	51,294.06	981.74	18,599.20
PIERREMONT ELEM.	98,051.00	47,052.04	3,745.67	47,253.29
RIVER BEND ELEM.	93,720.00	41,126.06	2,114.34	50,479.60
ROSS ELEM.	88,537.00	48,297.21	20,443.80	19,795.99
SORRENTO SPRINGS ELEM.	89,427.00	60,909.17	421.69	28,096.14
SHENANDOAH VALLEY ELEM.	92,699.00	55,679.68	613.28	36,406.04
WREN HOLLOW ELEM.	70,730.00	53,185.76	4,660.11	12,884.13
 Grand Total for Funds 10-12	 3,567,269.00	 2,145,957.49	 216,614.49	 1,204,697.02
Grand Total for Fund 20	0.00	37,986.46	0.00	-37,986.46
Grand Total for Fund 30	0.00	0.00	0.00	0.00
Grand Total for Funds 40-41	266,387.00	204,558.47	68,094.74	-6,266.21
Grand Total All	3,833,656.00	2,388,502.42	284,709.23	1,160,444.35

**Parkway School District
Consolidated Budget - Programs Recap Report**

Fiscal Year 2023 Through Period 10 Run Date: 05-23-2023 @ 13:48:44

	Budget	Expended	Encumbrances	Unexpended
SPECIAL READING	24,723.00	16,266.48	1,485.30	6,971.22
COMM ARTS	143,353.00	70,234.14	11,413.63	61,705.23
MATHEMATICS	63,018.00	46,128.21	2,645.84	14,243.95
FINE ARTS	131,644.00	93,665.76	11,363.25	26,614.99
PHYSICAL EDUCATION	64,476.00	46,762.09	3,347.22	14,366.69
SCIENCE	101,795.00	64,246.18	2,654.89	34,893.93
SOCIAL STUDIES	84,232.00	44,997.00	1,014.90	38,220.10
INSTRUCTIONAL TECHNOLOGY	114,789.00	45,060.42	5,610.00	64,118.58
GUIDANCE	30,895.00	20,067.01	749.05	10,078.94
ART	132,630.00	112,327.27	7,408.77	12,893.96
BLDG ADMIN SERVICES	2,455,899.00	1,597,633.73	184,210.69	674,054.58
AUDIO VISUAL SERVICES	1,700.00	89.90	0.00	1,610.10
BUSINESS EDUCATION	39,217.00	17,840.15	0.00	21,376.85
MODERN CLASSICAL LANG	39,504.00	22,761.35	300.00	16,442.65
FAMILY AND CONSUMER SC	80,111.00	55,566.99	0.00	24,544.01
INDUSTRIAL ARTS	43,340.00	35,626.20	4,188.92	3,524.88
STUDENT BODY ACT	152,710.00	126,455.54	30,426.42	-4,171.96
COOP VOC ED	2,525.00	509.89	0.00	2,015.11
UNIFIED STUDIES	2,322.00	1,962.29	0.00	359.71
SPEECH	26,874.00	16,765.27	1,599.00	8,509.73
LIBRARY SVCS	75,669.00	47,529.25	16,291.35	11,848.40
HEALTH ED	8,629.00	4,818.11	0.00	3,810.89
EEE CAMP	2,175.00	5,563.27	0.00	-3,388.27
ESOL	967.00	374.52	0.00	592.48
GIFTED EDUCATION	10,159.00	8,140.36	0.00	2,018.64
SPECIAL SERVICES	300.00	820.13	0.00	-520.13
INSTRUCTIONAL STAFFING	141,414,608.00	101,339,385.15	0.00	40,075,222.85
BLDG LEVEL STAFFING	16,959,604.00	13,455,346.81	0.00	3,504,257.19
ATHLETICS	1,990,250.00	1,369,530.35	78,524.23	542,195.42
ADULT BASIC EDUCATION	1,768,561.00	1,115,836.66	9,827.81	642,896.53
SWIM CLUB	1,018,133.00	369,088.42	0.00	649,044.58
EARLY CHILDHOOD	1,735,580.00	1,529,870.93	700.00	205,009.07
PRESCHOOLS	2,510,610.00	2,096,744.01	8.99	413,857.00
PARK ROCK COMM ED	21,400.00	27,163.99	4,839.50	-10,603.49
STUDENT SERVICES	1,146,547.00	1,699,476.49	269,948.20	-822,877.69
PUPIL PERSONNEL	2,318,278.00	1,525,069.68	2,028.84	791,179.48
HEALTH SERVICES	3,010,031.00	2,062,219.30	16,347.42	931,464.28
GUIDANCE AND COUNSELING	296,120.00	322,200.61	0.00	-26,080.61

**Parkway School District
Consolidated Budget - Programs Recap Report**

Fiscal Year 2023 Through Period 10 Run Date: 05-23-2023 @ 13:48:44

	Budget	Expended	Encumbrances	Unexpended
SEB SUPPORT	111,350.00	152,172.62	3,500.00	-44,322.62
DATA MGMT/RESEARCH	345,401.00	232,275.25	160.75	112,965.00
STUDENT DISC & ALT STUDIES	865,323.00	386,505.97	0.00	478,817.03
SPECIAL SERVICES	367,853.00	283,176.68	670.19	84,006.13
ASST SUPER OF STUDENT SERV	384,923.00	206,022.88	0.00	178,900.12
TEACH LEARN ACCOUNTABILITY	5,043,055.00	2,972,823.88	251,030.35	1,819,200.77
PROFESSIONAL LEARNING	1,495,922.00	657,754.48	8,880.00	829,287.52
READING DIAGNOSTICS	123,205.00	90,571.26	159.50	32,474.24
INSTRUC TECH LIBRARY MEDIA	1,210,560.00	941,436.53	59,689.86	209,433.61
STUDENT ASSESSMENT	327,410.00	190,367.10	101,681.62	35,361.28
PROGRESS MONITORING	213,501.00	155,921.50	0.00	57,579.50
ELEM COMM ARTS	20,800.00	21,126.60	0.00	-326.60
ELEM SOC STUDIES	24,750.00	18,179.65	0.00	6,570.35
ELEM MATH	2,000.00	1,455.27	0.00	544.73
ELEM SCIENCE	300.00	39.00	0.00	261.00
MIDD ELA	4,150.00	982.60	0.00	3,167.40
MIDD SOC STUDIES	600.00	5,468.82	0.00	-4,868.82
MIDD MATH	5,000.00	4,038.29	0.00	961.71
MIDD SCIENCE	13,375.00	2,396.31	0.00	10,978.69
HIGH ELA	40,755.00	21,221.12	0.00	19,533.88
HIGH SOC STUDIES	2,420.00	409.90	0.00	2,010.10
HIGH MATH	1,600.00	1,600.00	0.00	0.00
HIGH SCIENCE	2,500.00	2,499.32	0.00	0.68
FINE ARTS	253,575.00	176,537.92	35,484.21	41,552.87
PHYSICAL EDUC	1,150.00	1,036.91	0.00	113.09
GIFTED	24,715.00	23,251.67	0.00	1,463.33
ESOL	42,425.00	30,817.40	3,459.43	8,148.17
WORLD LANGUAGE	12,600.00	12,509.23	0.00	90.77
CAREER & TECH ED	7,550.00	4,624.29	0.00	2,925.71
CHOICE	958,024.00	543,681.12	142,869.16	271,473.72
INSTRUCTIONAL TECHNOLOGY	12,500.00	5,605.53	0.00	6,894.47
PATH	156,097.00	101,894.13	0.00	54,202.87
OASIS PROGRAM	9,900.00	15,498.73	0.00	-5,598.73
OUTDOOR SCHOOL	48,150.00	-16,956.35	3,033.52	62,072.83
SUMMER SCHOOL	984,720.00	264,192.36	42,200.00	678,327.64
VIRTUAL CAMPUS	3,990,439.00	1,985,784.99	4,524.71	2,000,129.30
BOARD OF EDUCATION	275,822.00	224,428.10	1,131.84	50,262.06
SUPERINTENDENT	507,874.00	407,101.87	0.00	100,772.13

**Parkway School District
Consolidated Budget - Programs Recap Report**

Fiscal Year 2023 Through Period 10 Run Date: 05-23-2023 @ 13:48:44

	Budget	Expended	Encumbrances	Unexpended
DISTRICT DUES	204,623.00	166,862.04	0.00	37,760.96
LEGAL SERVICES	200,000.00	124,932.44	29,559.11	45,508.45
DEPUTY SUPERINTENDENT	439,469.00	271,385.50	74,008.00	94,075.50
CHIEF FINANCIAL OFFICER	361,154.00	280,127.15	0.00	81,026.85
COMMUNICATIONS	1,108,852.75	802,110.38	24,394.33	282,348.04
SAFETY SECURITY	1,429,971.35	1,051,763.27	223,416.32	154,791.76
SPECIAL PROJECTS	703,008.00	107,898.90	10,598.37	584,510.73
FINANCE	1,145,080.00	969,460.33	32,973.88	142,645.79
INTERNAL EQUIP FIN	458,419.00	309,988.80	259,652.47	-111,222.27
RISK MGMT	2,862,854.00	2,217,710.09	93,820.42	551,323.49
FOOD SERVICES	8,206,400.25	5,515,997.37	394,582.37	2,295,820.51
PURCHASING	296,001.00	236,422.82	0.00	59,578.18
PRINT SHOP	36,468.00	45,630.07	8,685.94	-17,848.01
SCHOOL STORES	223,822.00	115,501.09	6,805.08	101,515.83
WAREHOUSE	749,538.00	477,432.88	549.66	271,555.46
MAILROOM	81,776.00	36,221.48	64.02	45,490.50
TECHNOLOGY	8,529,972.00	6,892,849.46	358,718.95	1,278,403.59
HUMAN RESOURCES	1,390,802.00	996,117.86	124,967.32	269,716.82
TRANSPORTATION	7,782,208.00	6,056,942.51	123,769.22	1,601,496.27
SSD TRANSPORTATION	2,411,988.00	1,685,420.94	0.00	726,567.06
CUSTODIAL	9,330,583.00	6,785,330.21	27,226.12	2,518,026.67
FACILITY MAINTENANCE	5,774,219.00	4,364,930.04	263,253.84	1,146,035.12
GROUNDS MAINTENANCE	2,770,929.00	1,672,941.06	38,291.41	1,059,696.53
PLANNING	1,660,904.00	1,743,098.01	210,539.27	-292,733.28
ENVIRONMENTAL SVCS	699,267.00	356,514.03	118,466.06	224,286.91
FACILITY MANAGEMENT	973,553.00	710,368.43	3,619.89	259,564.68
REBATE PROJECTS	500,000.00	76,061.00	162,794.00	261,145.00
ENERGY SERVICES	4,226,000.00	3,450,056.00	644,280.73	131,663.27
SUSTAINABILITY	627,134.00	309,157.97	235,459.71	82,516.32
2018 BOND	40,900,127.07	25,857,716.43	8,959,769.18	6,082,641.46
2022 BOND	5,550,000.00	1,501,595.10	4,225,432.73	-177,027.83
DEBT SERVICE	22,440,896.00	22,426,142.26	4,864.00	9,889.74
STATE GRANTS	346,111.00	172,013.00	0.00	174,098.00
FEDERAL GRANTS	1,841,527.00	1,577,114.07	37,391.07	227,021.86
LOCAL GRANTS	31,652.00	71,107.82	360.00	-39,815.82
Grand Total for Funds 10-12	91,810,613.35	65,300,501.06	4,264,993.81	22,245,118.48

**Parkway School District
Consolidated Budget - Programs Recap Report**

Fiscal Year 2023 Through Period 10 Run Date: 05-23-2023 @ 13:48:44

	Budget	Expended	Encumbrances	Unexpended
Grand Total for Fund 20	165,454,404.00	118,507,514.65	0.00	46,946,889.35
Grand Total for Fund 30	22,440,896.00	22,426,142.26	4,864.00	9,889.74
Grand Total for Funds 40-41	6,054,940.00	5,384,048.15	568,663.11	6,007,842.37
 Grand Total All	 332,210,980.42	 238,977,517.65	 18,023,722.83	 75,209,739.94

**Parkway School District
Program Budget - Programs Recap Report**

Fiscal Year 2023 Through Period 10 Run Date: 05-23-2023 @ 13:55:36

	Budget	Expended	Encumbrances	Unexpended
SPECIAL READING	24,723.00	16,266.48	1,485.30	6,971.22
COMM ARTS	143,353.00	70,234.14	11,413.63	61,705.23
MATHEMATICS	63,018.00	46,128.21	2,645.84	14,243.95
FINE ARTS	131,644.00	93,232.64	11,363.25	27,048.11
PHYSICAL EDUCATION	64,476.00	46,762.09	3,347.22	14,366.69
SCIENCE	101,795.00	64,246.18	2,654.89	34,893.93
SOCIAL STUDIES	84,232.00	44,997.00	1,014.90	38,220.10
INSTRUCTIONAL TECHNOLOGY	114,789.00	45,060.42	5,610.00	64,118.58
GUIDANCE	30,895.00	20,067.01	749.05	10,078.94
ART	132,630.00	112,327.27	7,408.77	12,893.96
BLDG ADMIN SERVICES	2,455,899.00	1,526,213.13	184,210.69	745,475.18
AUDIO VISUAL SERVICES	1,700.00	89.90	0.00	1,610.10
BUSINESS EDUCATION	39,217.00	17,840.15	0.00	21,376.85
MODERN CLASSICAL LANG	39,504.00	22,761.35	300.00	16,442.65
FAMILY AND CONSUMER SC	80,111.00	55,566.99	0.00	24,544.01
INDUSTRIAL ARTS	43,340.00	35,626.20	4,188.92	3,524.88
STUDENT BODY ACT	152,710.00	126,455.54	30,426.42	-4,171.96
COOP VOC ED	2,525.00	509.89	0.00	2,015.11
UNIFIED STUDIES	2,322.00	1,962.29	0.00	359.71
SPEECH	26,874.00	16,765.27	1,599.00	8,509.73
LIBRARY SVCS	75,669.00	47,529.25	16,291.35	11,848.40
HEALTH ED	8,629.00	4,818.11	0.00	3,810.89
EEE CAMP	2,175.00	5,563.27	0.00	-3,388.27
ESOL	967.00	374.52	0.00	592.48
GIFTED EDUCATION	10,159.00	8,140.36	0.00	2,018.64
SPECIAL SERVICES	300.00	820.13	0.00	-520.13
INSTRUCTIONAL STAFFING	3,400,000.00	2,332,030.11	0.00	1,067,969.89
ATHLETICS	1,056,981.00	632,204.72	78,524.23	346,252.05
ADULT BASIC EDUCATION	224,351.00	125,220.15	9,827.81	89,303.04
SWIM CLUB	138,200.00	17,817.08	0.00	120,382.92
EARLY CHILDHOOD	102,063.00	63,614.16	700.00	37,748.84
PRESCHOOLS	387,846.00	338,786.08	8.99	49,050.93
PARK ROCK COMM ED	21,400.00	26,456.68	4,839.50	-9,896.18
STUDENT SERVICES	1,126,730.00	1,648,289.27	269,948.20	-791,507.47
PUPIL PERSONNEL	306,468.00	93,367.37	2,028.84	211,071.79
HEALTH SERVICES	241,232.00	119,231.02	16,347.42	105,653.56

**Parkway School District
Program Budget - Programs Recap Report**

Fiscal Year 2023 Through Period 10 Run Date: 05-23-2023 @ 13:55:36

	Budget	Expended	Encumbrances	Unexpended
GUIDANCE AND COUNSELING	141,300.00	201,357.11	0.00	-60,057.11
SEB SUPPORT	111,350.00	40,627.05	3,500.00	67,222.95
DATA MGMT/RESEARCH	86,426.00	25,758.74	160.75	60,506.51
STUDENT DISC & ALT STUDIES	22,059.00	15,120.74	0.00	6,938.26
SPECIAL SERVICES	46,826.00	25,936.88	670.19	20,218.93
ASST SUPER OF STUDENT SERV	172,800.00	33,016.86	0.00	139,783.14
TEACH LEARN ACCOUNTABILITY	2,769,270.00	1,167,437.40	251,030.35	1,350,802.25
PROFESSIONAL LEARNING	611,115.00	200,856.78	8,880.00	401,378.22
READING DIAGNOSTICS	17,490.00	14,180.12	159.50	3,150.38
INSTRUC TECH LIBRARY MEDIA	441,890.00	340,598.22	59,689.86	41,601.92
STUDENT ASSESSMENT	155,180.00	77,773.89	101,681.62	-24,275.51
ELEM COMM ARTS	20,800.00	21,126.60	0.00	-326.60
ELEM SOC STUDIES	24,750.00	18,179.65	0.00	6,570.35
ELEM MATH	2,000.00	1,455.27	0.00	544.73
ELEM SCIENCE	300.00	39.00	0.00	261.00
MIDD ELA	4,150.00	982.60	0.00	3,167.40
MIDD SOC STUDIES	600.00	5,468.82	0.00	-4,868.82
MIDD MATH	5,000.00	4,038.29	0.00	961.71
MIDD SCIENCE	13,375.00	2,396.31	0.00	10,978.69
HIGH ELA	40,755.00	21,221.12	0.00	19,533.88
HIGH SOC STUDIES	2,420.00	409.90	0.00	2,010.10
HIGH MATH	1,600.00	1,600.00	0.00	0.00
HIGH SCIENCE	2,500.00	2,499.32	0.00	0.68
FINE ARTS	253,575.00	169,173.30	35,484.21	48,917.49
PHYSICAL EDUC	1,150.00	1,036.91	0.00	113.09
GIFTED	24,715.00	23,251.67	0.00	1,463.33
ESOL	26,700.00	26,490.61	3,459.43	-3,250.04
WORLD LANGUAGE	12,600.00	12,509.23	0.00	90.77
CAREER & TECH ED	7,550.00	4,624.29	0.00	2,925.71
CHOICE	870,500.00	473,316.40	142,869.16	254,314.44
INSTRUCTIONAL TECHNOLOGY	12,500.00	5,605.53	0.00	6,894.47
PATH	14,350.00	6,626.10	0.00	7,723.90
OASIS PROGRAM	9,900.00	8,243.12	0.00	1,656.88
OUTDOOR SCHOOL	48,150.00	-95,150.43	3,033.52	140,266.91
SUMMER SCHOOL	60,000.00	12,282.60	42,200.00	5,517.40
VIRTUAL CAMPUS	52,181.00	11,413.75	4,524.71	36,242.54

**Parkway School District
Program Budget - Programs Recap Report**

Fiscal Year 2023 Through Period 10 Run Date: 05-23-2023 @ 13:55:36

	Budget	Expended	Encumbrances	Unexpended
BOARD OF EDUCATION	275,822.00	224,428.10	1,131.84	50,262.06
SUPERINTENDENT	37,500.00	20,547.85	0.00	16,952.15
DISTRICT DUES	204,623.00	166,862.04	0.00	37,760.96
LEGAL SERVICES	200,000.00	124,932.44	29,559.11	45,508.45
DEPUTY SUPERINTENDENT	107,844.00	32,295.08	74,008.00	1,540.92
CHIEF FINANCIAL OFFICER	10,625.00	6,770.61	0.00	3,854.39
COMMUNICATIONS	229,005.75	150,810.65	24,394.33	53,800.77
SAFETY SECURITY	917,221.35	643,423.17	223,416.32	50,381.86
SPECIAL PROJECTS	292,555.00	37,282.99	10,598.37	244,673.64
FINANCE	105,985.00	83,552.91	32,973.88	-10,541.79
INTERNAL EQUIP FIN	458,419.00	309,988.80	259,652.47	-111,222.27
RISK MGMT	1,992,100.00	1,766,645.75	5,000.00	220,454.25
FOOD SERVICES	5,322,090.25	4,058,352.34	394,582.37	869,155.54
PURCHASING	61,760.00	5,050.80	0.00	56,709.20
PRINT SHOP	-23,359.00	66.04	8,685.94	-32,110.98
SCHOOL STORES	15,000.00	-4,603.13	6,805.08	12,798.05
WAREHOUSE	50,506.00	39,240.35	549.66	10,715.99
MAILROOM	17,810.00	10,338.84	64.02	7,407.14
TECHNOLOGY	4,885,856.00	4,413,096.86	358,718.95	114,040.19
HUMAN RESOURCES	286,180.00	92,994.25	124,967.32	68,218.43
TRANSPORTATION	1,924,356.00	1,783,696.22	123,769.22	16,890.56
SSD TRANSPORTATION	216,618.00	155,965.95	0.00	60,652.05
CUSTODIAL	555,260.00	1,268,612.79	27,226.12	-740,578.91
FACILITY MAINTENANCE	2,139,051.00	1,742,545.66	263,253.84	133,251.50
GROUNDS MAINTENANCE	1,421,065.00	924,076.10	38,291.41	458,697.49
PLANNING	941,400.00	1,213,481.67	210,539.27	-482,620.94
ENVIRONMENTAL SVCS	432,718.00	184,907.83	118,466.06	129,344.11
FACILITY MANAGEMENT	606,109.00	417,022.61	3,619.89	185,466.50
REBATE PROJECTS	500,000.00	76,061.00	162,794.00	261,145.00
ENERGY SERVICES	4,226,000.00	3,450,056.00	644,280.73	131,663.27
SUSTAINABILITY	551,181.00	245,828.77	235,459.71	69,892.52
2018 BOND	40,900,127.07	25,857,716.43	8,959,769.18	6,082,641.46
2022 BOND	5,550,000.00	1,501,595.10	4,225,432.73	-177,027.83
DEBT SERVICE	22,440,896.00	22,426,142.26	4,864.00	9,889.74
FEDERAL GRANTS	470,325.00	780,109.35	37,391.07	-347,175.42
LOCAL GRANTS	0.00	35,718.95	360.00	-36,078.95

**Parkway School District
Program Budget - Programs Recap Report**

Fiscal Year 2023 Through Period 10 Run Date: 05-23-2023 @ 13:55:36

	Budget	Expended	Encumbrances	Unexpended
STUDENT ACTIVITIES	6,849,713.02	2,033,908.66	727,049.37	4,088,754.99
 Grand Total for Funds 10-12	43,412,428.37	29,150,596.43	4,804,278.81	9,457,553.13
Grand Total for Fund 20	3,740,725.00	2,491,301.22	0.00	1,249,423.78
Grand Total for Fund 30	22,440,896.00	22,426,142.26	4,864.00	9,889.74
Grand Total for Funds 40-41	6,054,940.00	5,561,048.83	667,607.06	5,731,897.74
 Grand Total All	122,099,116.44	86,988,400.27	18,661,951.78	16,448,764.39

• **GLOSSARY**

ACCOUNTS PAYABLE - Unpaid amounts currently owed to vendors for goods and services provided.

ACCOUNTS RECEIVABLE - Revenues earned but not yet received by the District.

AMOUNT PROVIDED FOR BOND PRINCIPAL - Amount available to meet current and future bond payments.

AMOUNT TO BE PROVIDED FOR PRINCIPAL AND INTEREST - The amount of funds needed to repay remaining bonded indebtedness. This is a “memo type” entry and does not represent an actual accumulation of cash.

BONDS AND INTEREST PAYABLE - CURRENT - Amount of bond principal and interest payable in future years.

CONSTRUCTION IN PROGRESS - Amounts expended to date on construction projects not completed. When completed, this account is reduced by the total cost of the completed projects.

ENCUMBRANCES - Obligations in the form of purchase orders, contracts, salary commitments, etc. for which a budgeted appropriation has been made.

EQUITY IN GENERAL FIXED ASSETS - Represents the appropriation of funds over a number of years to acquire land, buildings / improvements, and equipment. It is an offset to the respective asset accounts.

FUND BALANCE - The excess of assets over liabilities, which represent the “net worth” of a fund.

FUNDS - The four basic funds and their purposes are:

Capital Projects (Building) - Only capital equipment and building additions / alterations can be charged to this fund. Primary sources of revenue are property / delinquent taxes, building leases, investment income and sale of bonds.

Debt Service - Bond principal, interest and fees associated with the issue and redemption of bonds are the only expenses chargeable to this fund. Primary sources of revenue are property / delinquent taxes and investment income.

General (Incidental) - Expenses not specifically chargeable to other funds are charged to this fund. Primary sources of revenue are property / delinquent taxes, sales tax, investment income, minimum guarantee, VST, textbook, transportation and food service.

Special Revenue (Teachers) - Only salaries for certificated personnel and the cost medical / dental / vision / life insurance can be charged to this fund. Primary sources of revenue are property / delinquent taxes, investment income, state utility tax, minimum guarantee and VST.

INVENTORIES - Value of consumables purchased for future use.

PREPAID EXPENSES - Services paid for in advance of use (e.g. insurance).

RESERVE - Portion of the fund balance which is segregated for a future use and, therefore, not available for future appropriation.

RESERVE FOR BUDGETED ENCUMBRANCE - Funds budgeted and encumbered but not yet spent.

RESTRICTED RESERVE - Balances in the General Fund or Capital Projects Fund restricted as to the use (e.g. future medical / dental benefits) or unspent bond issue funds.

UNREALIZED REVENUES - Revenues budgeted but not yet realized.

UNSPENT BUDGETED FUNDS - Funds budgeted but not expended or encumbered.



FOR MONTH OF: APRIL – FY23

Attached is a list (alphabetical by vendor) of purchase orders and order for payments \$500 to \$15,000 and \$15,000 + which the administration has approved in accordance with Policy #DJE BP

Reports per DIC.BP

c: Patty Bedborough, Dawne Trokey

ORDER FOR PAYMENT

\$500 - \$15,000

APRIL FY23

VENDOR	VENDOR NAME	OBJECT	DOC #	AMOUNT	WARRANT	CHECK #	INVOICE
625339	ALEXANDER REED DRY	6391	514699	\$ 666.00	REG	524873	PKWY WH CHOIR-ROBES
999994	ANDERSON-PITTMAN, NY	6398	515879	\$ 500.00	EARLY	525034	SCHOLAR 04/19/23
801214	ASSOCIATED COLLEGIAT	6398	517588	\$ 1,060.00		0	517588
300092	AT&T MOBILITY	6361	517168	\$ 1,940.97		0	0826811811-022523
300092	AT&T MOBILITY	6361	517167	\$ 2,368.71		0	834829586X02202023
300092	AT&T MOBILITY	6361	517166	\$ 3,563.00		0	6058646705
999997	AUSTIN MARRIOTT DOWN	6343	518141	\$ 1,171.44		0	518141
713020	AUTOMATIC CONTROLS E	6411	515806	\$ 657.50	REG	525071	10859
636053	BAKER, KATHLEEN NICO	6391	513918	\$ 550.00	REG	524660	2428
626927	BLOOKET LLC	6412	517804	\$ 750.00		0	6DFBF7C9-0005
600404	CAMBRIDGE UNIVERSITY	6431	517828	\$ 694.02		0	1410801699
300225	CHARTER COMMUNICATIO	6361	518480	\$ 1,490.53		0	1.15052E+14
626871	CHATTERJI, MALINI	6391	515971	\$ 750.00	REG	525241	1
626967	CHIHUAHUAS	6411	518562	\$ 510.72		0	518562
622450	CHRIS CAKES OF ST.LO	6411	518156	\$ 914.76		0	100006588
626852	CONCOURSE TEAM EXPRE	6411	515519	\$ 501.00	REG	525089	INV858823
626852	CONCOURSE TEAM EXPRE	6411	513809	\$ 540.00	REG	524678	INV868063
626852	CONCOURSE TEAM EXPRE	6411	513806	\$ 563.75	REG	524678	INV858834
626852	CONCOURSE TEAM EXPRE	6411	513807	\$ 610.50	REG	524678	INV859081
626852	CONCOURSE TEAM EXPRE	6411	513724	\$ 630.00	REG	524678	INV868059
626852	CONCOURSE TEAM EXPRE	6411	515920	\$ 750.00	REG	525089	INV877643
626852	CONCOURSE TEAM EXPRE	6411	513725	\$ 771.50	REG	524678	INV868064
626852	CONCOURSE TEAM EXPRE	6411	513794	\$ 918.75	REG	524678	INV843976
626852	CONCOURSE TEAM EXPRE	6411	515923	\$ 988.00	REG	525089	INV855393
613816	DALE SIGN SERVICE IN	6411	515500	\$ 512.50	050423	9472	157613
613816	DALE SIGN SERVICE IN	6411	514819	\$ 736.00	042023	9420	157287
999997	DAVE & BUSTER'S INC.	6398	517491	\$ 847.72		0	517491
999996	EDGECOMBE, TYLER	6391	513472	\$ 832.70	EARLY	525612	47632E
636031	EMBASSY SUITES BY HI	6398	518494	\$ 1,561.40		0	518494
954332	EMPIRE PRINTING, LLC	6411	513523	\$ 634.80	REG	524695	50394
600150	FORD HOTEL & SUPPLY	6411	515445	\$ 639.28	REG	525253	1413873
623671	FORT ZUMWALT SCHOOL	6391	515292	\$ 718.11	EARLY	524821	FZN INVIT JV/V BBALL
601184	FREESTYLE PHOTOGRAPH	6411	518651	\$ 730.69		0	1659675
630542	FRENCH GERLEMAN ELEC	6332	515439	\$ 965.29	050423	9476	11079102-00
999994	GOLLIDAY, SARAH	6341	513432	\$ 556.75	EARLY	524456	SIT HUDDLESTON MAR23
636060	GORHAM, DAVID W.	6391	514774	\$ 500.00	REG	524914	23-PKWY01
999997	GRAMMARLY COUKAKKAN	6412	517158	\$ 1,050.00		0	517158
999997	HOLIDAY INN EXPRESS	6343	518524	\$ 663.08		0	518524
999997	HOMEDEPOT.COM	6411	518558	\$ 666.50		0	518558

VENDOR	VENDOR NAME	OBJECT	DOC #	AMOUNT	WARRANT	CHECK #	INVOICE
843343	JOHNSTONE SUPPLY	6411	515400	\$ 950.60	REG	524928	2196005
999997	KKGROUPECTOR	6391	518648	\$ 577.75		0	518648
999997	MARRIOTT ATLANTA MAR	6343	517825	\$ 677.82		0	517825
301546	METROPOLITAN SEWER D	6335	517523	\$ 503.77		0	517523
301546	METROPOLITAN SEWER D	6335	517524	\$ 648.22		0	517524
301546	METROPOLITAN SEWER D	6335	517525	\$ 653.57		0	517525
301546	METROPOLITAN SEWER D	6335	517526	\$ 674.97		0	517526
301546	METROPOLITAN SEWER D	6335	517527	\$ 707.07		0	517527
301546	METROPOLITAN SEWER D	6335	517528	\$ 739.17		0	517528
301546	METROPOLITAN SEWER D	6335	517529	\$ 974.57		0	517529
301546	METROPOLITAN SEWER D	6335	517498	\$ 1,151.12		0	517498
301546	METROPOLITAN SEWER D	6335	517499	\$ 1,258.12		0	517499
301546	METROPOLITAN SEWER D	6335	517501	\$ 2,199.72		0	517501
301546	METROPOLITAN SEWER D	6335	517516	\$ 3,759.10		0	517516
302317	MISSOURI AMERICAN WA	6335	518229	\$ 516.70		0	518229
302317	MISSOURI AMERICAN WA	6335	518230	\$ 537.38		0	518230
302317	MISSOURI AMERICAN WA	6335	518191	\$ 565.66		0	518191
302317	MISSOURI AMERICAN WA	6335	518251	\$ 660.17		0	518251
302317	MISSOURI AMERICAN WA	6335	518192	\$ 665.56		0	518192
302317	MISSOURI AMERICAN WA	6335	518246	\$ 666.91		0	518246
302317	MISSOURI AMERICAN WA	6335	518182	\$ 683.06		0	518182
302317	MISSOURI AMERICAN WA	6335	518198	\$ 689.09		0	518198
302317	MISSOURI AMERICAN WA	6335	518247	\$ 723.63		0	518247
302317	MISSOURI AMERICAN WA	6335	518175	\$ 1,000.00		0	518175
302317	MISSOURI AMERICAN WA	6335	518195	\$ 1,000.00		0	518195
302317	MISSOURI AMERICAN WA	6335	518196	\$ 1,000.00		0	518196
302317	MISSOURI AMERICAN WA	6335	518201	\$ 1,000.00		0	518201
302317	MISSOURI AMERICAN WA	6335	518217	\$ 1,000.00		0	518217
302317	MISSOURI AMERICAN WA	6335	518218	\$ 1,000.00		0	518218
302317	MISSOURI AMERICAN WA	6335	518219	\$ 1,000.00		0	518219
302317	MISSOURI AMERICAN WA	6335	518241	\$ 1,000.00		0	518241
999997	MISSOURI FBLA-PBL	6398	518649	\$ 835.00		0	518649
811240	MORDT TRACTOR & EQUI	6541	513813	\$ 728.16	REG	524746	122679
800423	MU ALPHA THETA	6391	518650	\$ 610.00		0	518650
840007	NEW PIG CORPORATION	6411	513586	\$ 996.42	041323	9408	23943091-00
811157	NEW READERS PRESS	6431	517824	\$ 813.37		0	517824
999994	NGUYEN, ABIGAIL	6398	515255	\$ 500.00	EARLY	524848	NGUYENA041023
800427	NORTHWEST R-1 SCHOOL	6391	515858	\$ 500.00	EARLY	525030	237
809084	OFFICE ESSENTIALS IN	6411	517599	\$ 507.97		0	WO-283075-1
809084	OFFICE ESSENTIALS IN	6411	517874	\$ 509.81		0	WO-288037-1
809084	OFFICE ESSENTIALS IN	6411	517855	\$ 523.00		0	WO-283841-1
809084	OFFICE ESSENTIALS IN	6411	517558	\$ 526.80		0	WO-282119-1
809084	OFFICE ESSENTIALS IN	6411	517906	\$ 526.80		0	WO-284924-1
809084	OFFICE ESSENTIALS IN	6411	518147	\$ 658.50		0	WO-282232-1
809084	OFFICE ESSENTIALS IN	6411	517555	\$ 674.25		0	WO-281507-1
809084	OFFICE ESSENTIALS IN	6411	517885	\$ 681.21		0	WO-287011-1
809084	OFFICE ESSENTIALS IN	6411	517164	\$ 685.04		0	WO-293532-1
809084	OFFICE ESSENTIALS IN	6411	517620	\$ 691.45		0	WO-281793-1
809084	OFFICE ESSENTIALS IN	6411	518643	\$ 715.30		0	WO-295463-1

VENDOR	VENDOR NAME	OBJECT	DOC #	AMOUNT	WARRANT	CHECK #	INVOICE
809084	OFFICE ESSENTIALS IN	6411	517611	\$ 723.05		0	WO-287910-1
809084	OFFICE ESSENTIALS IN	6411	517595	\$ 769.52		0	WO-281801-1
809084	OFFICE ESSENTIALS IN	6411	518104	\$ 793.63		0	WO-292849-1
809084	OFFICE ESSENTIALS IN	6411	517570	\$ 822.00		0	WO-293681-1
809084	OFFICE ESSENTIALS IN	6411	517493	\$ 878.00		0	WO-293542-1
809084	OFFICE ESSENTIALS IN	6411	517880	\$ 878.00		0	WO-284979-1
809084	OFFICE ESSENTIALS IN	6411	518148	\$ 915.05		0	WO-282185-1
809084	OFFICE ESSENTIALS IN	6411	517863	\$ 957.96		0	WO-281562-1
809084	OFFICE ESSENTIALS IN	6411	517624	\$ 1,077.96		0	WO-293846-1
919088	PARISI, JOSEPH	6391	515851	\$ 500.00	REG	525314	2023-01
918999	PEDANOW	6312	517535	\$ 5,034.74		0	517535
999997	PLANET HOLLYWOOD ORL	6398	518547	\$ 1,241.86		0	518547
810486	PRIMARY SYSTEMS	6332	514775	\$ 720.00	REG	524758	21290
914844	QDOBA	6411	517533	\$ 798.25		0	1321667
912177	SC ELECTRIC INC.	6411	515809	\$ 616.48	REG	525132	114034
901136	SCHILLERS	6391	515942	\$ 529.14	REG	525329	4258745-01
907267	SCHOOL SPECIALTY,LLC	6411	513447	\$ 681.04	050423	9492	2.08132E+11
907267	SCHOOL SPECIALTY,LLC	6411	517628	\$ 799.30		0	40000439
919038	SCHREITER, JENNA	6391	515529	\$ 525.00	REG	525331	2022-7
919019	SIRENGPS	6391	514757	\$ 795.00	EARLY	524858	PKWYSD-03122023
913670	SOUTHWEST AIRLINES	6343	518105	\$ 674.95		0	518105
913670	SOUTHWEST AIRLINES	6343	518174	\$ 674.95		0	518174
942030	ST. LOUIS CNTY TRE	6312	515347	\$ 681.52	EARLY	525055	150292
908556	ST. LOUIS SPORTSWEAR	6411	513434	\$ 587.25	041323	9414	59404
908556	ST. LOUIS SPORTSWEAR	6411	513930	\$ 648.00	042023	9441	59459
919077	STACEY MONTGOMERY	6411	513892	\$ 500.00	EARLY	524640	D581
915817	THERMAL MECHANICS,LL	6411	515399	\$ 900.00	REG	524972	106416
999997	TST* Circle 7 Ranch	6411	517165	\$ 547.00		0	517165
913056	UNIVERSAL CITY DEV	6398	518553	\$ 560.35		0	518553
913056	UNIVERSAL CITY DEV	6398	518544	\$ 569.00		0	518544
622728	UNIVERSITY OF MISSOU	6319	518255	\$ 558.00		0	518255
915885	UNK, WILLIAM	6391	515860	\$ 500.00	REG	525340	23-01-CM
911626	VALENTI'S MARKET	6411	518585	\$ 521.09		0	518585
300044	VERIZON WIRELESS	6361	517486	\$ 920.10		0	9929015734
300044	VERIZON WIRELESS	6361	517486	\$ 3,050.84		0	9929015734
999997	WDW WORLD OF DISNEY	6398	518550	\$ 1,919.64		0	518550
999997	WEST MUSIC CATALOG	6411	518525	\$ 585.04		0	518525
104334	WINNING, CHARLES	6411	515880	\$ 573.03	REG	525146	REIMB 04/11/23
915806	WM OF ST LOUIS-SOUTH	6339	517143	\$ 6,980.55		0	0033845-2754-9
999997	Ya Ya's Eurobistro -	6411	518485	\$ 640.00		0	518485
TOTAL:				\$ 118,990.07			

PURCHASE ORDERS

\$500 - \$15,000

APRIL FY23

PO#	Vendor Name	PO Date	Order Amount	Balance	Status
63230242	WHOLESALE TELECOM INC. W T I	04/12/2023	\$ 518.00	\$ -	0 - Closed
63230249	DATA2 CORPORATION	04/18/2023	\$ 546.48	\$ -	0 - Closed
97230076	NEUMAYER EQUIPMENT COMPANY, INC.	04/25/2023	\$ 586.11	\$ -	0 - Closed
56230167	JOSTENS INC	04/10/2023	\$ 589.10	\$ -	0 - Closed
56230172	EMPIRE PRINTING, LLC	04/12/2023	\$ 595.80	\$ -	0 - Closed
58230123	BLICK ART MATERIALS	04/28/2023	\$ 631.06	\$ -	0 - Closed
2230034	VARITRONICS SYSTEMS, INC.	04/19/2023	\$ 634.92	\$ -	0 - Closed
54230164	STEVE WEISS MUSIC	04/25/2023	\$ 654.00	\$ 654.00	8 - Printed
56230173	CONCOURSE TEAM EXPRESS LLC	04/12/2023	\$ 675.00	\$ 675.00	8 - Printed
56230181	BLICK ART MATERIALS	04/19/2023	\$ 677.52	\$ -	0 - Closed
54230151	MANCHESTER UNITED METHODIST CHURCH	04/10/2023	\$ 700.00	\$ -	0 - Closed
54230163	TECHMART COMPUTER PRODUCTS, INC	04/25/2023	\$ 720.84	\$ -	0 - Closed
8230036	HALF-PINT KIDS, INC.	04/25/2023	\$ 792.00	\$ -	0 - Closed
83230135	FOLLETT SCHOOL SOLUTIONS, INC	04/11/2023	\$ 803.26	\$ -	0 - Closed
63230238	DELL MARKETING EDUCATIONAL SALES	04/07/2023	\$ 832.84	\$ -	0 - Closed
58230112	OFFICE ESSENTIALS INCORPORATED	04/10/2023	\$ 836.44	\$ -	0 - Closed
63230243	BEST BUY BUSINESS ADVANTAGE ACCOUNT	04/12/2023	\$ 849.95	\$ -	0 - Closed
58230115	OFFICE ESSENTIALS INCORPORATED	04/10/2023	\$ 911.87	\$ -	0 - Closed
92230022	CENGAGE LEARNING, INC	04/20/2023	\$ 960.30	\$ -	0 - Closed
56230175	CONCOURSE TEAM EXPRESS LLC	04/12/2023	\$ 964.75	\$ -	0 - Closed
60230022	FMHUB LLC	04/07/2023	\$ 1,000.00	\$ -	0 - Closed
13230005	ST. LOUIS ZOOLOGICAL PARK	04/25/2023	\$ 1,000.00	\$ -	8 - Printed
48230174	WSP USA INC	04/07/2023	\$ 1,004.50	\$ -	0 - Closed
92230021	CENGAGE LEARNING, INC	04/05/2023	\$ 1,013.10	\$ -	0 - Closed
45230042	EGAN ENTERPRISES INC	04/26/2023	\$ 1,020.00	\$ 1,020.00	8 - Printed
56230185	PANERA BREAD COMPANY	04/25/2023	\$ 1,052.16	\$ 1,052.16	8 - Printed
92230024	PROLITERACY WORLDWIDE	04/24/2023	\$ 1,052.51	\$ -	0 - Closed
54230167	OFFICE ESSENTIALS INCORPORATED	04/25/2023	\$ 1,066.38	\$ 1,066.38	8 - Printed
41230023	FIRST EVANGELICAL FREE CHURCH	04/10/2023	\$ 1,070.00	\$ 535.00	8 - Printed
58230125	NATIONAL ASSOCIATION FOR MUSIC EDUCATIO	04/28/2023	\$ 1,072.00	\$ -	8 - Printed
73230029	BOARD OF EDUCATION	04/10/2023	\$ 1,076.00	\$ -	0 - Closed
56230188	SOUTHWEST STRINGS, INC	04/25/2023	\$ 1,090.14	\$ -	0 - Closed
56230171	EMPIRE PRINTING, LLC	04/12/2023	\$ 1,129.50	\$ -	0 - Closed
83230138	FOLLETT SCHOOL SOLUTIONS, INC	04/11/2023	\$ 1,147.68	\$ -	0 - Closed
45230040	INNOVATIVE HEIGHTS CHESTERFIELD LLC	04/25/2023	\$ 1,149.08	\$ 164.83	8 - Printed
8230035	WHOLE PHONICS, INC.	04/25/2023	\$ 1,150.44	\$ -	0 - Closed
56230169	BLICK ART MATERIALS	04/12/2023	\$ 1,163.88	\$ 1,163.88	8 - Printed
58230110	FLINN SCIENTIFIC INC	04/10/2023	\$ 1,172.45	\$ -	0 - Closed
43230020	WEINHARDT PARTY RENTAL, INC.	04/26/2023	\$ 1,190.00	\$ 1,190.00	8 - Printed
40230037	ST. LOUIS SPORTSWEAR, INC.	04/10/2023	\$ 1,200.00	\$ -	0 - Closed
5230012	WHOLE PHONICS, INC.	04/10/2023	\$ 1,200.00	\$ -	0 - Closed
58230122	NOTHING BUNDT CAKES	04/28/2023	\$ 1,222.50	\$ 1,222.50	8 - Printed
2230031	ST. LOUIS ZOOLOGICAL PARK	04/10/2023	\$ 1,233.00	\$ -	0 - Closed
50230123	PHENICIE, SHANE	04/12/2023	\$ 1,250.00	\$ 1,250.00	8 - Printed
45230041	RED ROBIN INTERNATIONAL	04/25/2023	\$ 1,277.36	\$ 1,277.36	8 - Printed

PO#	Vendor Name	PO Date	Order Amount	Balance	Status
56230174	W.C & D ENTERPRISES	04/12/2023	\$ 1,318.50	\$ 1,318.50	8 - Printed
6230035	J COLE INC.	04/10/2023	\$ 1,330.00	\$ -	0 - Closed
61230022	GFI DIGITAL INC	04/12/2023	\$ 1,344.36	\$ 1,344.36	8 - Printed
2230032	EGAN ENTERPRISES INC	04/10/2023	\$ 1,360.00	\$ 1,360.00	8 - Printed
56230180	RACKET MAN -	04/19/2023	\$ 1,364.00	\$ 1,364.00	8 - Printed
56230187	NOTTELMANN MUSIC CO	04/25/2023	\$ 1,375.00	\$ -	0 - Closed
45230035	CIRCUS TRIX MISSOURI, LLC	04/10/2023	\$ 1,384.07	\$ 1,384.07	8 - Printed
54230154	FOREST HILLS COUNTRY CLUB	04/12/2023	\$ 1,387.00	\$ -	0 - Closed
50230125	DAKTRONICS INC	04/19/2023	\$ 1,410.00	\$ -	0 - Closed
46230028	AMF BOWLING CENTERS INC.	04/12/2023	\$ 1,436.68	\$ -	0 - Closed
56230189	CASUAL TEES	04/25/2023	\$ 1,454.45	\$ -	0 - Closed
50230124	W.C & D ENTERPRISES	04/12/2023	\$ 1,463.50	\$ 1,463.50	8 - Printed
58230119	W.C & D ENTERPRISES	04/19/2023	\$ 1,463.50	\$ 1,463.50	8 - Printed
54230158	CONCOURSE TEAM EXPRESS LLC	04/19/2023	\$ 1,492.50	\$ -	0 - Closed
58230114	JOSTENS INC	04/10/2023	\$ 1,500.00	\$ 351.05	8 - Printed
62230349	FOLLETT SCHOOL SOLUTIONS, INC	04/11/2023	\$ 1,500.00	\$ -	0 - Closed
83230129	CENGAGE LEARNING, INC	04/10/2023	\$ 1,528.22	\$ -	0 - Closed
54230153	SIX FLAGS	04/12/2023	\$ 1,529.49	\$ -	8 - Printed
54230161	CONCOURSE TEAM EXPRESS LLC	04/25/2023	\$ 1,530.00	\$ -	0 - Closed
83230137	FOLLETT SCHOOL SOLUTIONS, INC	04/11/2023	\$ 1,536.72	\$ -	0 - Closed
59230005	WEINHARDT PARTY RENTAL, INC.	04/17/2023	\$ 1,539.40	\$ -	0 - Closed
58230118	BSN SPORTS LLC	04/19/2023	\$ 1,539.85	\$ 1,539.85	8 - Printed
83230132	CENGAGE LEARNING, INC	04/11/2023	\$ 1,599.98	\$ -	0 - Closed
40230038	BROADWAY PLUS VIP SERVICES LLC	04/10/2023	\$ 1,650.00	\$ -	8 - Printed
50230126	BSN SPORTS LLC	04/25/2023	\$ 1,650.00	\$ -	0 - Closed
85230338	TYLER & SONS LLC	04/27/2023	\$ 1,677.16	\$ 1,677.16	8 - Printed
54230157	W.C & D ENTERPRISES	04/19/2023	\$ 1,723.50	\$ 1,723.50	8 - Printed
54230162	SSI FURNISHINGS	04/25/2023	\$ 1,725.00	\$ 1,725.00	8 - Printed
58230116	BIO RAD LABORATORIES, INC	04/19/2023	\$ 1,851.00	\$ 1,851.00	8 - Printed
85230328	SECURITY EQUIPMENT SUPPLY	04/12/2023	\$ 1,852.00	\$ 1,852.00	8 - Printed
56230186	AMERICAN BAND ACCESSORIES LLC	04/25/2023	\$ 1,860.00	\$ 1,860.00	8 - Printed
58230126	CASUAL TEES	04/28/2023	\$ 1,902.95	\$ -	0 - Closed
40230041	AALCO MANUFACTURING COMPANY	04/19/2023	\$ 1,926.00	\$ -	0 - Closed
58230127	ANDRE'S BANQUET FACILITIES	04/28/2023	\$ 1,938.15	\$ -	0 - Closed
9230008	FOLLETT SCHOOL SOLUTIONS, INC	04/10/2023	\$ 1,950.09	\$ 1,950.09	8 - Printed
11230012	DRAPERIES BY MORTON MOEL	04/10/2023	\$ 1,973.00	\$ -	0 - Closed
54230165	DCH, LLC	04/25/2023	\$ 2,000.00	\$ -	0 - Closed
56230166	NOTTELMANN MUSIC CO	04/10/2023	\$ 2,000.00	\$ 1,100.00	8 - Printed
58230113	CONCOURSE TEAM EXPRESS LLC	04/10/2023	\$ 2,101.20	\$ -	0 - Closed
62230353	SECURE MEDICATION SYSTEMS	04/20/2023	\$ 2,110.00	\$ -	0 - Closed
40230039	QDOBA MEXICAN EATS	04/10/2023	\$ 2,142.40	\$ 2,142.40	8 - Printed
58230120	LIMINEX, INC.	04/26/2023	\$ 2,175.00	\$ -	0 - Closed
56230192	OFFICE ESSENTIALS INCORPORATED	04/28/2023	\$ 2,303.98	\$ 2,303.98	8 - Printed
63230247	MOSYLE CORPORATION	04/12/2023	\$ 2,306.00	\$ -	0 - Closed
48230177	CMS COMMUNICATIONS INC	04/26/2023	\$ 2,325.00	\$ -	0 - Closed
54230156	OFFICE ESSENTIALS INCORPORATED	04/19/2023	\$ 2,395.26	\$ 2,395.26	8 - Printed
45230039	BLACKLIGHT PRODUCTIONS LLC	04/19/2023	\$ 2,500.00	\$ -	0 - Closed
58230117	CASUAL TEES	04/19/2023	\$ 2,500.00	\$ -	0 - Closed
40230044	W. SCHILLER & CO., INC.	04/26/2023	\$ 2,500.00	\$ 2,500.00	8 - Printed

PO#	Vendor Name	PO Date	Order Amount	Balance	Status
40230043	GCATER, LLC	04/25/2023	\$ 2,557.31	\$ 2,557.31	8 - Printed
58230111	SOUTHERN RECOGNITION, INC.	04/10/2023	\$ 2,558.40	\$ 2,558.40	8 - Printed
83230134	FOLLETT SCHOOL SOLUTIONS, INC	04/11/2023	\$ 2,649.90	\$ -	0 - Closed
54230166	GOPHER SPORT	04/25/2023	\$ 2,771.17	\$ 247.64	8 - Printed
92230023	MAACCE-MISSOURI ASSOCIATION FOR ADULT C	04/20/2023	\$ 2,790.00	\$ -	0 - Closed
41230024	CHIHUAHUAS INC	04/10/2023	\$ 2,800.00	\$ -	0 - Closed
12230014	J.P. COLLIER, INC.	04/12/2023	\$ 2,865.58	\$ -	0 - Closed
74230037	MACMILLAN HOLDINGS, LLC	04/11/2023	\$ 2,866.50	\$ -	0 - Closed
15230012	OFFICE ESSENTIALS INCORPORATED	04/19/2023	\$ 2,875.94	\$ 2,875.94	8 - Printed
85230329	MECHANICAL SUPPLY	04/12/2023	\$ 2,970.00	\$ -	0 - Closed
64230009	DIVERSE MEDIA, INC	04/18/2023	\$ 2,995.00	\$ -	0 - Closed
63230256	MINNESOTA MEMORY, INC.	04/26/2023	\$ 2,999.50	\$ -	0 - Closed
63230246	MINNESOTA MEMORY, INC.	04/12/2023	\$ 2,999.50	\$ -	0 - Closed
63230232	MINNESOTA MEMORY, INC.	04/03/2023	\$ 2,999.50	\$ -	0 - Closed
83230131	FOLLETT SCHOOL SOLUTIONS, INC	04/11/2023	\$ 3,026.48	\$ 3,026.48	8 - Printed
56230170	WAGNER PORTRAIT GROUP	04/12/2023	\$ 3,150.00	\$ 3,150.00	8 - Printed
63230255	NORTHSTAR AV	04/26/2023	\$ 3,182.33	\$ 3,182.33	8 - Printed
11230013	LITERATI, INC.	04/19/2023	\$ 3,200.00	\$ -	0 - Closed
85230337	4IMPRINT, INC	04/27/2023	\$ 3,222.44	\$ -	0 - Closed
62230352	UNIV. OF KANSAS CENTER OF RESEARCH	04/12/2023	\$ 3,350.00	\$ -	0 - Closed
61230021	AMAZON	04/12/2023	\$ 3,499.00	\$ -	8 - Printed
54230160	SCHUMERT, STEPHEN	04/25/2023	\$ 3,499.00	\$ 3,499.00	8 - Printed
63230250	APPLE INC.	04/19/2023	\$ 3,898.00	\$ 1,599.00	8 - Printed
84230005	SPECIAL SCHOOL DIST. OF ST. LOUIS COUNTY	04/24/2023	\$ 4,069.45	\$ -	0 - Closed
45230036	COACHLITE MANAGEMENT SERVICES	04/10/2023	\$ 4,165.00	\$ 4,165.00	8 - Printed
83230139	THE NEW YORK TIMES COMPANY	04/19/2023	\$ 4,253.60	\$ 4,253.60	8 - Printed
63230239	APPLE INC.	04/10/2023	\$ 4,304.00	\$ -	0 - Closed
43230021	OFFICE ESSENTIALS INCORPORATED	04/26/2023	\$ 4,319.62	\$ 4,319.62	8 - Printed
54230150	OFFICE ESSENTIALS INCORPORATED	04/10/2023	\$ 4,410.53	\$ 4,410.53	8 - Printed
63230235	NORTHSTAR AV	04/07/2023	\$ 4,429.95	\$ -	0 - Closed
46230027	WENGER CORP	04/10/2023	\$ 4,543.00	\$ -	0 - Closed
14230016	ST. LOUIS CARDINALS -GROUP SALES	04/26/2023	\$ 4,687.68	\$ 4,687.68	8 - Printed
12230013	BAYOC, CBABI	04/10/2023	\$ 4,700.00	\$ -	8 - Printed
71230022	PHENICIE, SHANE	04/25/2023	\$ 4,815.00	\$ -	0 - Closed
85230331	TRANE U.S. INC	04/17/2023	\$ 4,848.34	\$ -	0 - Closed
20230024	ST. LOUIS CARDINALS -GROUP SALES	04/10/2023	\$ 4,923.00	\$ -	0 - Closed
36230039	SAM'S CLUB DIRECT	04/18/2023	\$ 5,000.00	\$ 5,000.00	8 - Printed
36230040	ST. LOUIS FOOD BANK	04/18/2023	\$ 5,000.00	\$ 3,045.26	8 - Printed
85230336	DRAPERIES BY MORTON MOEL	04/24/2023	\$ 5,000.00	\$ 5,000.00	8 - Printed
83230128	FOLLETT SCHOOL SOLUTIONS, INC	04/10/2023	\$ 5,148.94	\$ -	0 - Closed
74230036	VERNIER SOFTWARE & TECHNOLOGY LLC	04/11/2023	\$ 5,253.52	\$ -	0 - Closed
54230149	SSI FURNISHINGS	04/10/2023	\$ 5,701.21	\$ -	0 - Closed
85230327	BIRKEL ELECTRIC	04/03/2023	\$ 5,819.88	\$ 5,819.88	8 - Printed
97230073	LOWE AUTOMOTIVE	04/04/2023	\$ 6,000.00	\$ 3,936.93	8 - Printed
97230074	CLARKE POWER SERVICES INC	04/19/2023	\$ 6,000.00	\$ -	0 - Closed
32230010	NASN	04/20/2023	\$ 6,138.00	\$ -	0 - Closed
58230124	GUARDIAN INNOVATIONS LLC	04/28/2023	\$ 6,160.00	\$ -	0 - Closed
58230121	OFFICE ESSENTIALS INCORPORATED	04/28/2023	\$ 6,215.80	\$ 6,215.80	8 - Printed
83230127	FOLLETT SCHOOL SOLUTIONS, INC	04/10/2023	\$ 6,297.65	\$ -	0 - Closed

PO#	Vendor Name	PO Date	Order Amount	Balance	Status
40230036	SIX FLAGS	04/10/2023	\$ 6,297.95	\$ -	8 - Printed
83230136	FOLLETT SCHOOL SOLUTIONS, INC	04/11/2023	\$ 6,676.37	\$ 6,676.37	8 - Printed
50230127	EMPIRE PRINTING, LLC	04/25/2023	\$ 6,940.37	\$ -	0 - Closed
36230038	SCHNUCKS #173-PCARD USE ONLY	04/18/2023	\$ 7,000.00	\$ 7,000.00	8 - Printed
97230072	BPB HOLDING CORP.	04/04/2023	\$ 8,000.00	\$ 7,492.89	8 - Printed
54230168	BSN SPORTS LLC	04/26/2023	\$ 8,200.00	\$ 2,870.00	8 - Printed
61230023	STARBEAM LIGHTING LLC	04/24/2023	\$ 8,500.00	\$ 8,500.00	8 - Printed
61230024	STARBEAM LIGHTING LLC	04/24/2023	\$ 8,500.00	\$ 8,500.00	8 - Printed
62230351	MSA MUSIC INC	04/11/2023	\$ 9,340.00	\$ -	0 - Closed
45230037	KENDALL, LLC	04/11/2023	\$ 9,679.00	\$ 9,679.00	8 - Printed
40230042	NEWSELA, INC.	04/19/2023	\$ 9,872.50	\$ 9,872.50	8 - Printed
62230350	CENGAGE LEARNING, INC	04/11/2023	\$ 9,986.48	\$ -	0 - Closed
54230155	MISSOURI DECA	04/14/2023	\$ 10,150.00	\$ -	0 - Closed
41230025	SIX FLAGS	04/19/2023	\$ 10,700.00	\$ 10,700.00	8 - Printed
72230009	GATEWAY REGION YOUNG MEN'S CHRISTIAN A'	04/14/2023	\$ 10,887.00	\$ -	0 - Closed
85230335	SUPERIOR INDUSTRIAL COATINGS	04/20/2023	\$ 11,700.00	\$ -	0 - Closed
56230191	BSN SPORTS LLC	04/26/2023	\$ 12,330.00	\$ -	0 - Closed
36230042	CPI-CRISIS PREVENTION INSTITUTE, INC.	04/19/2023	\$ 12,747.00	\$ -	0 - Closed
65230024	CARE AND COUNSELING, INC.	04/11/2023	\$ 13,750.00	\$ -	0 - Closed
36230037	HAZELWOOD SCHOOL DISTRICT	04/11/2023	\$ 13,880.91	\$ -	0 - Closed
63230248	GRAYBAR ELEC CO	04/12/2023	\$ 13,941.41	\$ -	0 - Closed
85230333	SIEVEKING, INCORPORATED	04/19/2023	\$ 13,955.14	\$ -	0 - Closed
72230007	GATEWAY REGION YOUNG MEN'S CHRISTIAN A'	04/11/2023	\$ 14,670.00	\$ -	0 - Closed
40230040	OFFICE ESSENTIALS INCORPORATED	04/11/2023	\$ 14,938.26	\$ 14,938.26	8 - Printed
TOTAL:			\$ 583,479.94		

\$15,000+
APRIL FY23

PO#	Vendor Name	PO Date	Order Amount	Balance	Status
56230190	BSN SPORTS LLC	04/26/2023	\$ 15,207.00	\$ 15,207.00	8 - Printed
85230330	MERLO PLUMBING INC	04/13/2023	\$ 15,762.00	\$ -	0 - Closed
85230332	AUTOMATIC CONTROLS EQUIP.	04/19/2023	\$ 15,872.00	\$ 15,872.00	8 - Printed
85230334	MIDWEST MACHINERY COMPANY	04/19/2023	\$ 17,770.03	\$ 17,770.03	8 - Printed
72230008	GATEWAY REGION YOUNG MEN'S CHRISTIAN A	04/11/2023	\$ 18,019.00	\$ -	0 - Closed
75230039	COLLECTOR OF REVENUE-ST.LOUIS COUNTY	04/11/2023	\$ 21,586.16	\$ -	0 - Closed
60230023	GILMORE & BELL ATTORNEY AT LAW	04/19/2023	\$ 22,000.00	\$ 22,000.00	8 - Printed
97230075	SIEVEKING, INCORPORATED	04/19/2023	\$ 22,333.05	\$ -	0 - Closed
63230251	SCENARIO LEARNING LLC	04/19/2023	\$ 23,035.95	\$ 23,035.95	8 - Printed
60230025	PIPER SANDLER & CO	04/24/2023	\$ 25,000.00	\$ -	0 - Closed
97230070	MIDWEST TRANSIT EQUIPMENT	04/04/2023	\$ 25,000.00	\$ 16,484.31	8 - Printed
54230152	DCH, LLC	04/11/2023	\$ 31,480.00	\$ -	0 - Closed
97230069	RUSH TRUCK CENTERS OF MISSOURI INC.	04/04/2023	\$ 37,000.00	\$ 15,485.51	8 - Printed
45230038	OFFICE ESSENTIALS INCORPORATED	04/11/2023	\$ 38,235.41	\$ 38,235.41	8 - Printed
97230071	RUSH TRUCK CENTERS OF MISSOURI INC.	04/04/2023	\$ 40,000.00	\$ 40,000.00	8 - Printed
60230024	GILMORE & BELL ATTORNEY AT LAW	04/24/2023	\$ 77,000.00	\$ -	0 - Closed
86230019	CONVERGEONE, INC	04/12/2023	\$ 83,010.00	\$ 58,107.00	8 - Printed
63230253	JOURNEYED.COM, INC	04/26/2023	\$ 95,487.16	\$ -	0 - Closed
48230176	MCCARTHY HOLDINGS INC	04/24/2023	\$ 97,909.38	\$ 15,971.18	8 - Printed
36230041	VOLUNTARY INTERDISTRICT CHOICE	04/19/2023	\$ 100,000.00	\$ 66,797.47	8 - Printed
63230252	DELL MARKETING EDUCATIONAL SALES	04/26/2023	\$ 446,575.00	\$ 446,575.00	8 - Printed
63230241	WIRELESS USA, INC.	04/11/2023	\$ 449,222.00	\$ 449,222.00	8 - Printed
86230018	TARKETT USA INC.	04/11/2023	\$ 456,986.00	\$ 456,986.00	8 - Printed
48230175	W. SCHILLER & CO., INC.	04/19/2023	\$ 653,698.00	\$ 653,698.00	8 - Printed
TOTAL:			\$ 2,828,188.14		

SPOT MARKET REPORT - March FY23

PO #	Create Date	Vendor	Name	Com	Qty.	UOM	Unit Price	Description	Object	Account	Amt
07/01/22 - 07/31/22			Office Essentials	202	10	Case	\$ 42.90	30% Recycled Paper		\$	429.00
08/01/22 - 08/31/22			Office Essentials	202	430	Case	\$ 42.90	30% Recycled Paper		\$	18,447.00
09/01/22 - 09/30/22			Office Essentials	202	403	Case	\$ 42.90	30% Recycled Paper		\$	17,288.70
10/1/2022 - 10/31/22			Office Essentials	202	417	Case	\$ 42.90	30% Recycled Paper		\$	17,889.30
11/1/2022 - 11/30/2022			Office Essentials	202	463	Case	\$ 45.90	30% Recycled Paper		\$	21,251.70
12/1/2022 - 12/31/2022			Office Essentials	202	346	Case	\$ 45.90	30% Recycled Paper		\$	15,881.40
1/1/2023-01/30/23			Office Essentials	202	471	Case	\$ 45.90	30% Recycled Paper		\$	21,618.90
2/1/23 - 2/28/23			Office Essentials	202	392	Case	\$ 45.90	30% Recycled and Plain Paper		\$	14,556.90
3/1/23 - 3/31/23			Office Essentials	202	352	Case	\$ 43.90	Plain Paper		\$	15,492.80
04/01/23 - 04/30/23			Office Essentials	202	396	Case	\$ 43.90	Plain Paper		\$	17,384.40
85230123	07/18/2022	642477	ENERGY PETROLEUM COMPANY	400	250	EACH	\$ 3.58	NO LEAD 87 OCT RFG	6486	\$	895.00
85230123					1	EACH	\$ 55.14	FEDERAL AND STATE TAXES AND FEES	6486	\$	55.14
85230123					250	EACH	\$ 4.08	#2 DIESEL ULTRA LS	6486	\$	1,020.00
85230123					1	EACH	\$ 55.75	FEDERAL AND STATE TAXES AND FEES	6486	\$	55.75
85230123					1750.2	EACH	\$ 3.58	NO LEAD 87 OCT RFG	6486	\$	6,265.72
85230123					1	EACH	\$ 385.98	FEDERAL AND STATE TAXES AND FEES	6486	\$	385.98
85230139	08/03/2022	910351	SIEVEKING, INCORPORATED	400	426.7	EACH	\$ 3.13	NO LEAD 87 OCT RFG	6486	\$	1,336.94
85230139					1	EACH	\$ 98.07	FEDERAL AND STATE TAXES AND FEES	6486	\$	98.07
85230139					185	EACH	\$ 3.65	UL SULFUR HI-WAY DIESEL	6486	\$	675.73
85230139					1	EACH	\$ 43.88	FEDERAL AND STATE TAXES AND FEES	6486	\$	43.88
85230139					698	EACH	\$ 3.13	NO LEAD 87 OCT RFG	6486	\$	2,186.97
85230139					1	EACH	\$ 161.29	FEDERAL AND STATE TAXES AND FEES	6486	\$	161.29
85230155	08/23/2022	642477	ENERGY PETROLEUM COMPANY	400	2358.4	EACH	\$ 2.81	NO LEADY 87 OCT RFG	6486	\$	6,627.10
85230155					1	EACH	\$ 535.66	FEDERAL AND STATE TAXES AND FEES	6486	\$	535.66
85230155					416.9	EACH	\$ 2.81	NO LEAD 87 OCT RFG	6486	\$	1,171.49
85230155					1	EACH	\$ 94.69	FEDERAL AND STATE TAXES AND FEES	6486	\$	94.69
85230155					250	EACH	\$ 3.47	#2 DIESEL ULTRA LS	6486	\$	867.50
85230155					1	EACH	\$ 56.85	FEDERAL AND STATE TAXES AND FEES	6486	\$	56.85
85230168	09/01/2022	642477	ENERGY PETROLEUM COMPANY	400	1325	EACH	\$ 2.74	NO LEAD 87 OCT RFG	6486	\$	3,630.50
85230168					1	EACH	\$ 300.96	FEDERAL AND STATE TAXES AND FESS	6486	\$	300.96
85230168					412.9	EACH	\$ 2.74	NO LEAD 87 OCT RFG	6486	\$	1,131.35
85230168					1	EACH	\$ 93.79	FEDERAL AND STATE TAXES AND FEES	6486	\$	93.79
85230168					200.1	EACH	\$ 3.99	#2 DIESEL ULTRA LS	6486	\$	797.54
85230168					1	EACH	\$ 45.49	FEDERAL AND STATE TAXES AND FEES	6486	\$	45.49
85230182	09/21/2022	910351	SIEVEKING, INCORPORATED	400	331.2	EACH	\$ 2.87	NO LEADY 87 OCT RFG	6486	\$	950.51
85230182					1	EACH	\$ 76.66	FEDERAL AND STATE TAXES AND FEES	6486	\$	76.66
85230182					326.4	EACH	\$ 4.00	UL SULFUR HI-WAY DIESEL	6486	\$	1,305.99
85230182					1	EACH	\$ 75.58	FEDERAL AND STATE TAXES AND FEES	6486	\$	75.58
85230182					3052.9	EACH	\$ 2.87	NO LEADY 87 OCT RFG	6486	\$	8,761.52
85230182					1	EACH	\$ 689.26	FEDERAL AND STATE TAXES AND FEES	6486	\$	689.26
85230200	10/07/2022	626035	HOME SERVICE OIL CO INC	400	4166	EACH	\$ 2.69	NO LEAD 87 OCT RFG	6486	\$	11,206.54
85230200					1	EACH	\$ 946.23	FEDERAL AND STATE TAXES AND FEES	6486	\$	946.23
85230200					300.2	EACH	\$ 2.69	NO LEAD 87 OCT RFG	6486	\$	807.54
85230200					300	EACH	\$ 3.69	#2 ULTRA LOW SULFUR DIESEL	6486	\$	1,107.00

85230200					1	EACH	\$	136.38	FEDERAL AND STATE TAXES AND FEES	6486	\$	136.38
85230209	10/21/2022	642477	ENERGY PETROLEUM COMPANY	400	183.2	EACH	\$	4.08	#2 ULTRA LOW SULFUR DIESEL	6486	\$	747.46
85230209					1	EACH	\$	41.64	FEDERAL AND STATE TAXES AND FEES	6486	\$	41.64
85230209					326	EACH	\$	2.86	NO LEAD RFG GASOLINE	6486	\$	932.36
85230209					1	EACH	\$	74.05	FEDERAL AND STATE TAXES AND FEES	6486	\$	74.05
85230209					3857.7	EACH	\$	2.86	NO LEAD RFG GASOLINE	6486	\$	11,033.02
85230209					1	EACH	\$	876.19	FEDERAL AND STATE TAXES AND FEES	6486	\$	876.19
85230212	10/31/2022	642477	ENERGY PETROLEUM COMPANY	400	4018.3	EACH	\$	2.75	NO LEAD RFG GASOLINE	6486	\$	11,050.33
85230212					1	EACH	\$	912.67	FEDERAL AND STATE TAXES AND FEES	6486	\$	912.67
85230212					37.3	EACH	\$	2.75	UNLEADED REF GASOLINE	6486	\$	102.58
85230212					1	EACH	\$	8.48	FEDERAL AND STATE TAXES AND FEES	6486	\$	8.48
85230212					290.4	EACH	\$	2.75	UNLEADED RFG GASOLINE	6486	\$	798.60
85230212					1	EACH	\$	65.96	FEDERAL AND STATE TAXES AND FEES	6486	\$	65.96
85230212					240	EACH	\$	3.91	ULTRA LOW SULFUR DIESEL	6486	\$	938.40
85230212					1	EACH	\$	54.56	FEDERAL AND STATE TAXES AND FEES	6486	\$	54.56
85230225	11/22/2022	910351	SIEVEKING, INCORPORATED	400	4012	EACH	\$	2.60	NO LEAD 87 OCTANE GASOLINE	6486	\$	10,431.20
85230225					1	EACH	\$	904.29	FEDERAL AND STATE TAXES AND FEES	6486	\$	904.29
85230225					421.6	EACH	\$	2.60	NO LEAD 87 OCTANE	6486	\$	1,096.16
85230225					1	EACH	\$	96.92	FEDERAL AND STATE TAXES AND FEES	6486	\$	96.92
85230225					103.9	EACH	\$	3.91	UL SULFUR HI-WAY DIESEL	6486	\$	406.25
85230225					1	EACH	\$	25.69	FEDERAL AND STATE TAXES AND FEES	6486	\$	25.69
85230245	12/12/2022	910351	SIEVEKING, INCORPORATED	400	4224	EACH	\$	2.17	NO LEAD 87 OCTANE	6486	\$	9,161.43
85230245					1	EACH	\$	951.82	FEDERAL AND STATE TAXES AND FEES	6486	\$	951.82
85230245					425.1	EACH	\$	2.17	NO LEAD 87 OCTANE	6486	\$	922.00
85230245					1	EACH	\$	100.11	FEDERAL AND STATE TAXES AND FEES	6486	\$	100.11
85230249	12/21/2022	910351	SIEVEKING, INCORPORATED	400	4200	EACH	\$	2.18	NO LEAD 87 OCTANE	6486	\$	9,136.68
85230249					1	EACH	\$	946.44	FEDERAL AND STATE TAXES AND FEES	6486	\$	946.44
85230249					200	EACH	\$	2.18	NO LEAD 87 OCTANE	6486	\$	435.08
85230249					1	EACH	\$	47.24	FEDERAL AND STATE TAXES AND FEES	6486	\$	47.24
85230249					166.2	EACH	\$	3.11	UL SULFUR HI-WAY DIESEL	6486	\$	517.53
85230249					1	EACH	\$	39.66	FEDERAL AND STATE TAXES AND FEES	6486	\$	39.66
85230255	01/17/2023	910351	SIEVEKING, INCORPORATED	400	400.1	EACH	\$	2.37	NO LEAD 87 OCTANE	6486	\$	948.24
85230255					1	EACH	\$	94.70	FEDERAL AND STATE TAXES AND FEES	6486	\$	94.70
85230255					4035	EACH	\$	2.37	NO LEAD 87 OCTANE	6486	\$	9,562.95
85230255					1	EACH	\$	911.46	FEDERAL AND STATE TAXES AND FEES	6486	\$	911.46
85230282	02/06/2023	642477	ENERGY PETROLEUM COMPANY	400	2841.9	EACH	\$	2.65	NO LEAD 87 OCTANE	6486	\$	7,531.04
85230282					1	EACH	\$	656.90	FEDERAL AND STATE TAXES AND FEES	6486	\$	656.90
85230282					400.1	EACH	\$	2.65	NO LEAD 87 OCTANE	6486	\$	1,060.27
85230282					1	EACH	\$	92.48	FEDERAL AND STATE TAXES AND FEES	6486	\$	92.48
85230283	02/07/2023	910351	SIEVEKING, INCORPORATED	400	369.6	EACH	\$	2.64	NO LEAD 87 OCTANE	6486	\$	975.37
85230283					1	EACH	\$	87.85	FEDERAL AND STATE TAXES AND FEES	6486	\$	87.85
85230283					4000	EACH	\$	2.64	NO LEAD 87 OCTANE	6486	\$	10,556.00
85230283					1	EACH	\$	903.60	FEDERAL AND STATE TAXES AND FEES	6486	\$	903.60
85230297	02/22/2023	910351	SIEVEKING, INCORPORATED	400	365.3	EACH	\$	2.38	NO LEAD 87 OCTANE	6486	\$	869.45
85230297					1	EACH	\$	85.48	FEDERAL AND STATE TAXES AND FEES	6486	\$	85.48
85230297					333.7	EACH	\$	2.85	UL SULFUR HI-WAY DIESEL	6486	\$	949.64

85230297				1	EACH	\$ 78.38	FEDERAL AND STATE TAXES AND FEES	6486	\$ 78.38	
85230297				700.1	EACH	\$ 2.38	NO LEAD 87 OCTANE	6486	\$ 1,666.31	
85230297				1	EACH	\$ 164.11	FEDERAL AND STATE TAXES AND FEES	6486	\$ 164.11	
85230303	03/06/2023	910351	SIEVEKING, INCORPORATED	400	401.1	EACH	\$ 2.39	NO LEAD 87 OCTANE	6486	\$ 956.62
85230303				1	EACH	\$ 96.93	FEDERAL AND STATE TAXES AND FEES	6486	\$ 96.93	
85230303				4027	EACH	\$ 2.39	NO LEAD 87 OCTANE	6487	\$ 9,604.40	
85230303				1	EACH	\$ 911.67	FEDERAL AND STATE TAXES AND FEES	6488	\$ 911.67	
85230322	03/28/2023	626035	HOME SERVICE OIL CO INC	400	4045	EACH	\$ 2.46	NO LEAD 87 OCTANE	6489	\$ 9,933.31
85230322				1	EACH	\$ 934.98	FEDERAL AND STATE TAXES AND FEES	6490	\$ 934.98	
85230322				400.2	EACH	\$ 2.46	NO LEAD 87 OCTANE	6491	\$ 982.77	
85230322				1	EACH	\$ 92.50	FEDERAL AND STATE TAXES AND FEES	6492	\$ 92.50	
85230326	03/30/2023	910351	SIEVEKING, INCORPORATED	400	1964	EACH	\$ 2.57	NO LEAD 87 OCTANE	6493	\$ 5,037.66
85230326				1	EACH	\$ 448.11	FEDERAL AND STATE TAXES AND FEES	6494	\$ 448.11	
85230326				458.3	EACH	\$ 2.57	NO LEAD 87 OCTANE	6495	\$ 1,175.54	
85230326				1	EACH	\$ 109.78	FEDERAL AND STATE TAXES AND FEES	6496	\$ 109.78	
85230333	04/19/2023	910351	SIEVEKING, INCORPORATED	400	4011	EACH	\$ 2.84	NO LEAD 87 OCTANE	6486	\$ 11,394.85
85230333				1	EACH	\$ 908.07	FEDERAL AND STATE TAXES AND FEES	6486	\$ 908.07	
85230333				252.5	EACH	\$ 2.80	UL SULFUR HI-WAY DIESEL	6486	\$ 705.79	
85230333				1	EACH	\$ 60.14	FEDERAL AND STATE TAXES AND FEES	6486	\$ 60.14	
85230333				288	EACH	\$ 2.84	NO LEAD 87 OCTANE	6486	\$ 818.18	
85230333				1	EACH	\$ 68.11	FEDERAL AND STATE TAXES AND FEES	6486	\$ 68.11	
85230177	09/13/2022	914674	UNIPAK CORP.	401	400	EACH	\$ 24.60	UPC # 404816N TRASH CAN LINERS (LARGE	6411	\$ 9,840.00
85230177					800	EACH	\$ 14.18	UPC #4013 TRASH CAN LINERS (MEDIUM) 3	6411	\$ 11,344.00
85230177					100	EACH	\$ 19.75	UPC #24R TRASH CAN LINERS (SMALL) 24" >	6411	\$ 1,975.00
85230251	01/06/2023	914674	UNIPAK CORP.	401	400	EACH	\$ 20.80	UPS #404816N 40" X 48" - 16 MICRON HIGH	6411	\$ 8,320.00
85230251					200	EACH	\$ 16.50	UPC #24R 24" X 23" - 0.4 MIL LINEAR LOW I	6411	\$ 3,300.00
97230032	08/31/2022	800559	KIESEL COMPANY	500	7500	EACH	\$ 4.21	PREMIUM #2 ULTRA LOW SULFUR DIESEL	6486	\$ 31,575.00
97230032					7500	EACH	\$ 0.00	FED OIL SPILL FEE	6486	\$ 16.05
97230032					7500	EACH	\$ 0.00	MO AGI TAX PER GAL	6486	\$ 7.50
97230032					7500	EACH	\$ 0.17	MO STATE TAX PER GAL	6486	\$ 1,275.00
97230032					7500	EACH	\$ 0.00	MO ADG INSP. FEE TAX PER GAL	6486	\$ 5.25
97230032					7500	EACH	\$ 0.00	MO USTD TRANSP. LOAD FEE TAX PER GAL	6486	\$ 18.75
97230038	09/21/2022	642477	ENERGY PETROLEUM COMPANY	500	7500	EACH	\$ 3.50	PREMIUM ULTRA LOW SULFUR #2 DIESEL	6486	\$ 26,250.00
97230038					7500	EACH	\$ 0.00	FED OIL SPILL FEE	6486	\$ 16.05
97230038					7500	EACH	\$ 0.00	MO. AGI TAX PER GAL	6486	\$ 7.50
97230038					7500	EACH	\$ 0.17	MO. STATE TAX PER GAL	6486	\$ 1,275.00
97230038					7500	EACH	\$ 0.00	MO ADG INSP. FEE TAX PER GAL	6486	\$ 5.25
97230038					7500	EACH	\$ 0.00	MO. USTD TRANSP. LOAD FEE	6486	\$ 18.75
97230039	10/12/2022	910351	SIEVEKING, INCORPORATED	500	7500	EACH	\$ 3.38	ULTRA LOW SULFUR #2 DIESEL	6486	\$ 25,349.25
97230039					7500	EACH	\$ 0.00	FED. OIL SPILL FEE	6486	\$ 16.05
97230039					7500	EACH	\$ 0.00	MO. AGI TAX PER GAL	6486	\$ 7.50
97230039					7500	EACH	\$ 0.17	MO. STATE TAX PER GAL	6486	\$ 1,275.00
97230039					7500	EACH	\$ 0.00	MO. ADG INSP. FEE	6486	\$ 5.25
97230039					7500	EACH	\$ 0.00	MO. USTD TRANSP. LOAD FEE	6486	\$ 18.75
97230041	11/09/2022	910351	SIEVEKING, INCORPORATED	500	7500	EACH	\$ 3.70	PREMIUM #2 ULTRA LOW SULFUR DIESEL FI	6486	\$ 27,728.25
97230041					7500	EACH	\$ 0.00	FED OIL SPILL FEE	6486	\$ 16.05

97230041					7500	EACH	\$	0.00	MO AGI TAX PER GAL	6486	\$	7.50
97230041					7500	EACH	\$	0.17	MO STATE TAX PER GAL	6486	\$	1,275.00
97230041					7500	EACH	\$	0.00	MO ADG INSP FEE TAX PER GAL	6486	\$	5.25
97230041					7500	EACH	\$	0.00	MO USTD TRANSP LOAD FEE TAX PER GAL	6486	\$	18.75
97230042	11/28/2022	910351	SIEVEKING, INCORPORATED	500	7500	EACH	\$	3.83	ULTRA LOW SULFUR #2 DIESEL FUEL	6486	\$	28,755.00
97230042					7500	EACH	\$	0.00	FED OIL SPILL FEE	6486	\$	16.05
97230042					7500	EACH	\$	0.00	MO AGI TAX PER GAL	6486	\$	7.50
97230042					7500	EACH	\$	0.17	MO STATE TAX PER GAL	6486	\$	1,275.00
97230042					7500	EACH	\$	0.00	MO ADG INSP FEE	6486	\$	5.25
97230042					7500	EACH	\$	0.00	MO USTD TRANSP LOAD FEE	6486	\$	18.75
97230045	12/12/2022	910351	SIEVEKING, INCORPORATED	500	7500	EACH	\$	2.96	PREMIUM #2 ULTRA LOW SULFUR DIESEL	6486	\$	22,188.75
97230045					7500	EACH	\$	0.00	FED OIL SPILL FEE	6486	\$	16.05
97230045					7500	EACH	\$	0.00	MO. AGI TAX PER GAL	6486	\$	7.50
97230045					7500	EACH	\$	0.17	MO. STATE TAX PER GAL	6486	\$	1,275.00
97230045					7500	EACH	\$	0.00	MO. ADG INSP. FEE TAX PER GAL	6486	\$	5.25
97230045					7500	EACH	\$	0.00	MO. USTD TRANSP. LOAD FEE	6486	\$	18.75
97230049	01/12/2023	910351	SIEVEKING, INCORPORATED	500	7500	EACH	\$	2.59	PREMIUM ULTRA LOW SULFUR DIESEL FUEL	6486	\$	19,391.25
97230049					7500	EACH	\$	0.00	FED. OIL SPILL FEE	6486	\$	16.05
97230049					7500	EACH	\$	0.00	MO AGI TAX PER GAL EXTRA	6486	\$	7.50
97230049					7500	EACH	\$	0.17	MO STATE TAX PER GAL	6486	\$	1,275.00
97230049					7500	EACH	\$	0.00	MO ADG INSP FEE TAX PER GAL	6486	\$	5.25
97230049					7500	EACH	\$	0.00	MO USTD TRANSP. LOAD FEE	6486	\$	18.75
97230056	02/10/2023	626035	HOME SERVICE OIL CO INC	500	7500	EACH	\$	2.93	PREMIUM #2 ULTRA LOW SULFUR DIESEL FI	6486	\$	21,975.00
97230056					7500	EACH	\$	0.00	FED. OIL SPILL FEE	6486	\$	16.05
97230056					7500	EACH	\$	0.00	MO. AGI TAX PER GAL	6486	\$	7.50
97230056					7500	EACH	\$	0.17	MO. STATE TAX PER GAL	6486	\$	1,275.00
97230056					7500	EACH	\$	0.00	MO. ADG INSP FEE TAX PER GAL	6486	\$	5.25
97230056					7500	EACH	\$	0.00	MO. USTD STRANSF LOAD FEE TAX PER GAL	6486	\$	18.75
97230065	03/08/2023	910351	SIEVEKING, INCORPORATED	500	7500	EACH	\$	2.70	PREMIUM #2 ULTRA LOW SULFUR DIESEL FI	6486	\$	20,250.00
97230065					7500	EACH	\$	0.00	FED OIL SPILL FEE	6486	\$	16.05
97230065					7500	EACH	\$	0.00	MO AGI TAX PER GAL	6486	\$	7.50
97230065					7500	EACH	\$	0.17	MO STATE TAX PER GAL	6486	\$	1,275.00
97230065					7500	EACH	\$	0.00	MO ADG INSP FEE TAX PER GAL	6486	\$	5.25
97230065					7500	EACH	\$	0.00	MO USTD TRANSP LOAD FEE TAX PER GAL	6486	\$	18.75
97230067	03/27/2023	910351	SIEVEKING, INCORPORATED	500	7500	EACH	\$	2.59	PREMIUM #2 ULSD FUEL	6486	\$	19,461.75
97230067					7500	EACH	\$	0.00	FED OIL SPILL FEE	6486	\$	16.05
97230067					7500	EACH	\$	0.00	MO AGI TAX PER GAL	6486	\$	7.50
97230067					7500	EACH	\$	0.17	MO STATE TAX PER GAL	6486	\$	1,275.00
97230067					7500	EACH	\$	0.00	MO ADG INSP FEE TAX PER GAL	6486	\$	5.25
97230067					7500	EACH	\$	0.00	MO USTD TRANSP LOAD FEE TAX PER GAL	6486	\$	18.75
97230075	04/19/2023	910351	SIEVEKING, INCORPORATED	500	7500	EACH	\$	2.80	ULTRA LOW SULFUR #2 DIESEL FUEL	6486	\$	21,010.50
97230075					7500	EACH	\$	0.00	FED OIL SPILL FEE	6486	\$	16.05
97230075					7500	EACH	\$	0.00	MO. AGI TAX PER GAL	6486	\$	7.50
97230075					7500	EACH	\$	0.17	MO. STATE TAX PER GAL	6486	\$	1,275.00
97230075					7500	EACH	\$	0.00	MO. ADG INSP. FEE TAX PER GAL	6486	\$	5.25
97230075					7500	EACH	\$	0.00	MO. USTD TRANSP. LOAD FEE TAX PER	6486	\$	18.75

Total Commodity 202 (Paper)	\$ 160,240.10
Total Commodity 400 (Fuel - Facilities)	\$ 198,885.04
Total Commodity 500 (Fuel - Transportation)	\$ 278,482.80
Total Commodity 401 (Trash Liners)	<u>\$ 34,779.00</u>
Grand Total All Commodity	\$ 672,386.94